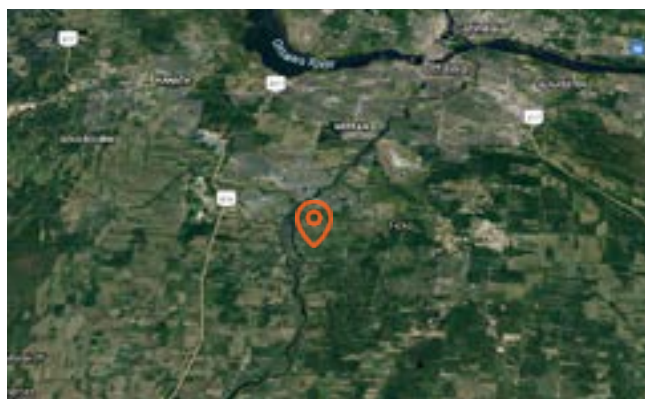




Available For Sale
192 Acres

Agricultural Land in
Ottawa, ON



For more information please contact:

For more information please contact:

Gillian Burnside

Sales Representative, Vice-President
D +1 613 696 2734
gillian.burnside@avisonyoung.com

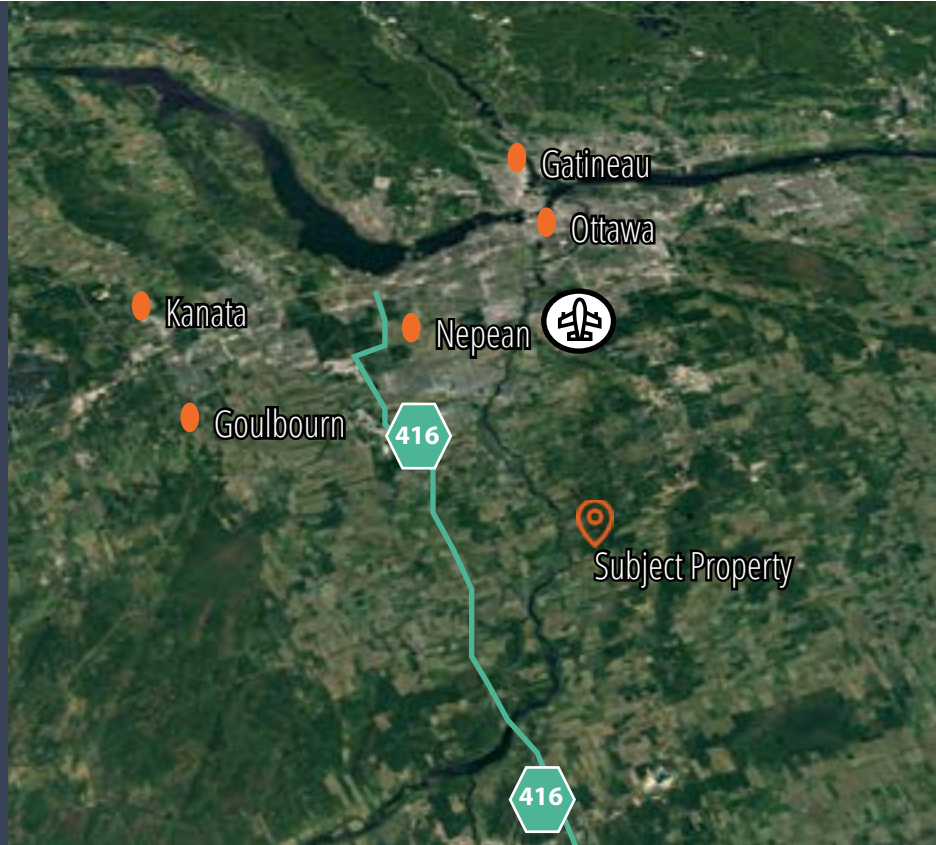
Ron Milligan

Sales Representative, Vice-President
D +1 613 696 2750
ron.milligan@avisonyoung.com

FOR SALE

Beautiful agricultural parcel fronting River Road and overlooking the Rideau River

Neighbouring the beautiful Village of Manotick and located at the juncture of Mitch Owens Road and River Road

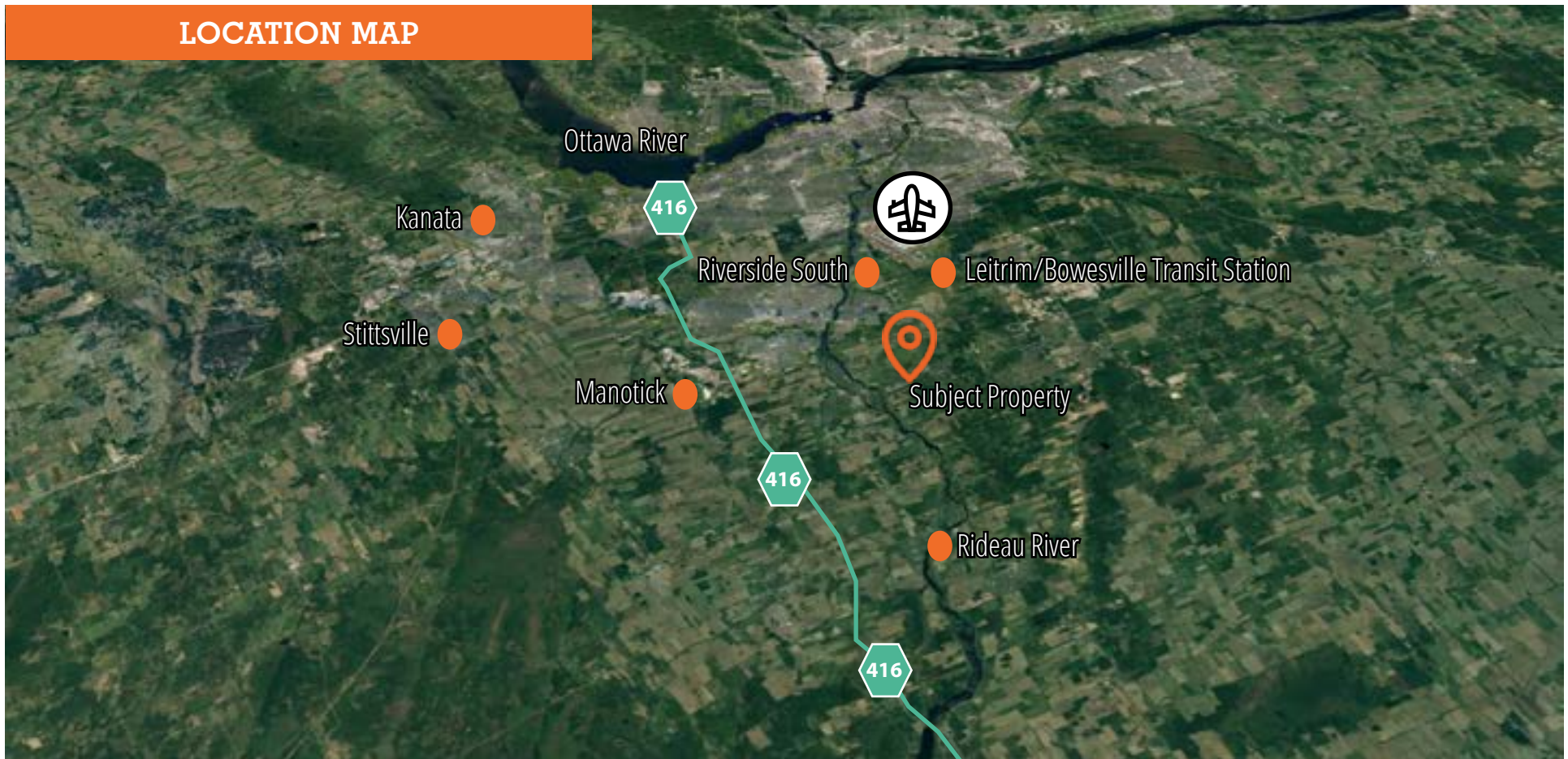


Property Details

- Asking Price: \$4,226,700.00 or \$21,900.00 per acre
- 192 acres available
- Long-term legacy hold, with future development potential
- Located approximately 10 minutes from Bowesville LRT transit station
- Easy access to Highway 416

[Click here](#) for zoning

LOCATION MAP



4 minutes
2 km to
Village of Manotick

8 minutes
7 km to
Riverside South

10 minutes
10 km to
Highway 416

10 minutes
12 km to
Bowesville Transit
Station

18 minutes
17 km to
Ottawa International
Airport

**AVISON
YOUNG**

**Get more
information**

Gillian Burnside
Sales Representative, Vice-President
D +1 613 696 2734
gillian.burnside@avisonyoung.com

Ron Milligan
Sales Representative, Vice-President
D +1 613 696 2750
ron.milligan@avisonyoung.com

