

## Rural Countryside Land

- Price: \$1,149,000.00
- 120 acres (approx.) available
- Adjacent to the village boundary
- Beautiful residential severances possible
- Additional adjacent 105 acres available for sale also with potential severances
- RU - Rural Countryside Zone
- [Click here](#) for detailed zoning information

### Get more information

**Gillian Burnside**

Sales Representative, Vice-President  
D +1 613 696 2734  
[gillian.burnside@avisonyoung.com](mailto:gillian.burnside@avisonyoung.com)

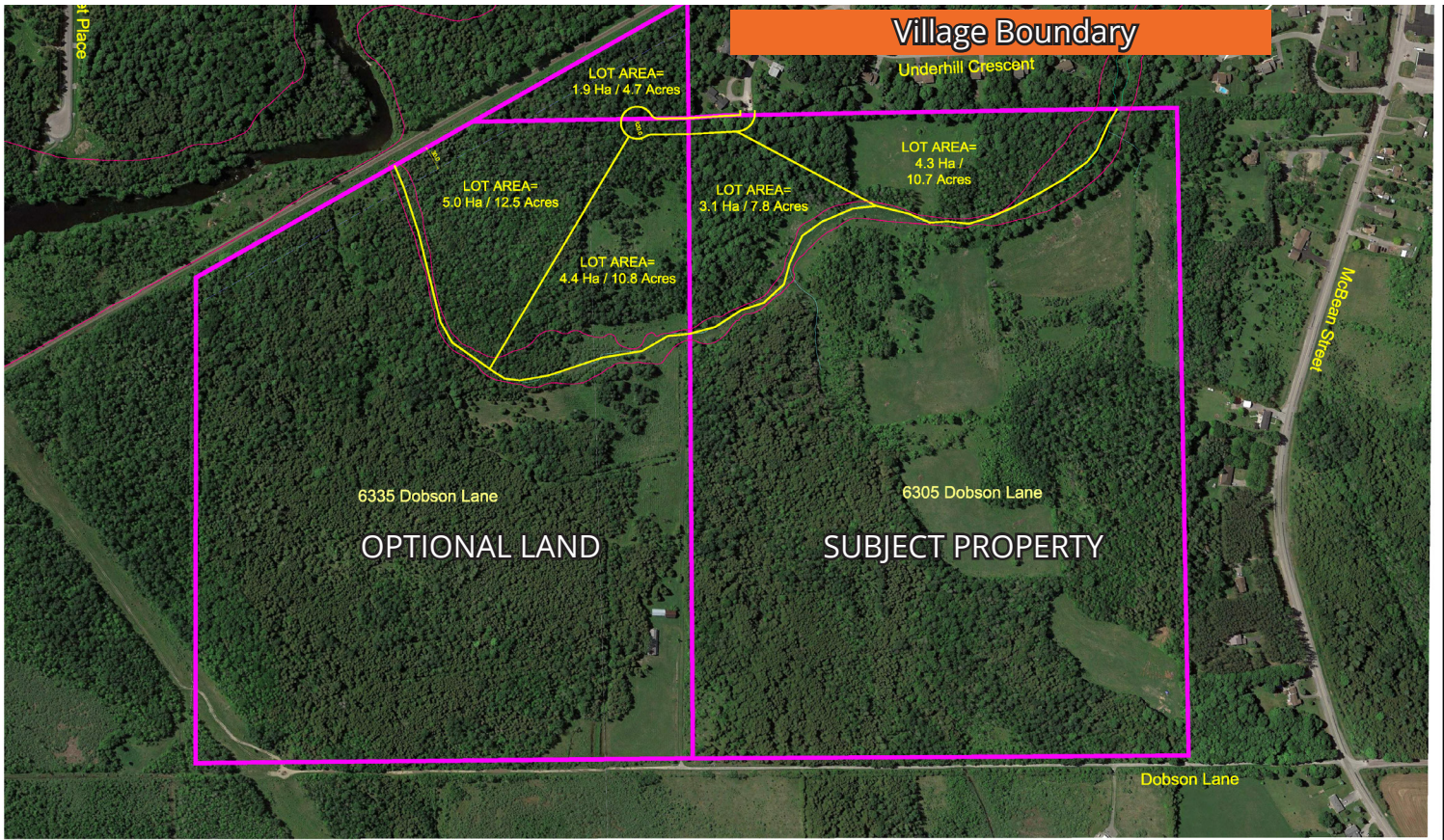
**Ron Milligan**

Sales Representative, Vice-President  
D +1 613 696 2750  
[ron.milligan@avisonyoung.com](mailto:ron.milligan@avisonyoung.com)



# Severance potential

**For Sale**  
**Rural Countryside Land**  
6305 Dobson Lane, Richmond, ON



6305 Dobson Lane presents a unique opportunity to purchase RU Zoned Lands immediately adjacent to the village boundary for the Village of Richmond. While not immediately developable, initial work in consultation with a planner provides for up to two spectacular severances off of Richland Drive. The remaining residual lands are ideal for a third residential lot, or for additional uses permitted under the RU zoning. The parcel also presents as potential long-term investment 'hold' for future village expansion.

With Mattamy Homes (Richmond Meadows), Caivan Communities (Fox Run), Cardel Homes, (Creekside), Colonnade Developments (Commercial), and Tamarack Homes launching in the town of Richmond, it is a quickly growing vibrant community located 10 minutes from Highway 416 and 15 minutes from Kanata.

[Click here](#) for information on additional approx. 105 acres adjacent site for sale at 6335 Dobson Lane

**AVISON  
YOUNG**

**Gillian Burnside**  
Sales Representative, Vice-President  
D +1 613 696 2734  
gillian.burnside@avisonyoung.com

**Ron Milligan**  
Sales Representative, Vice-President  
D +1 613 696 2750  
ron.milligan@avisonyoung.com



# Local development

**For Sale**  
**Rural Countryside Land**  
6305 Dobson Lane, Richmond, ON



**AVISON  
YOUNG**

**Gillian Burnside**  
Sales Representative, Vice-President  
D +1 613 696 2734  
[gillian.burnside@avisonyoung.com](mailto:gillian.burnside@avisonyoung.com)

**Ron Milligan**  
Sales Representative, Vice-President  
D +1 613 696 2750  
[ron.milligan@avisonyoung.com](mailto:ron.milligan@avisonyoung.com)

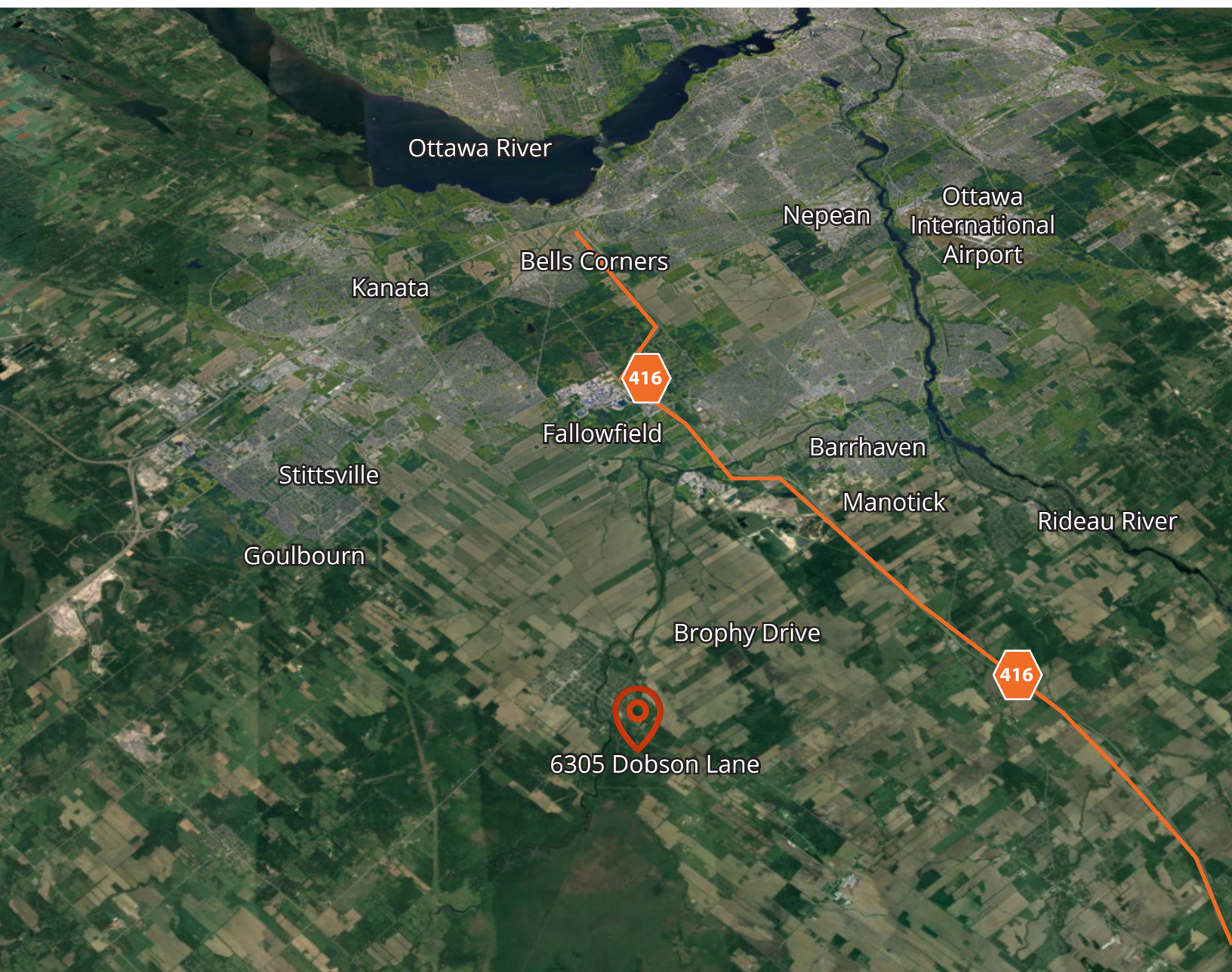
Avison Young Commercial Real Estate Services, LP, Brokerage | 45 O'Connor Street, Suite 800 | Ottawa, ON K1P 1A4 | +1 613 567 2680 | [avisonyoung.ca](http://avisonyoung.ca)

All rights reserved. E. & O.E.: The information contained herein was obtained from sources which we deem reliable and, while thought to be correct, is not guaranteed by Avison Young.



# Location map

**For Sale**  
**Rural Countryside Land**  
6305 Dobson Lane, Richmond, ON



**10 minutes**  
15 km to  
Highway 416

**15 minutes**  
19 km to  
Kanata

**18 minutes**  
17 km to  
Barrhaven

**30 minutes**  
40 km to  
Downtown Ottawa

**AVISON  
YOUNG**

**Gillian Burnside**  
Sales Representative, Vice-President  
D +1 613 696 2734  
gillian.burnside@avisonyoung.com

**Ron Milligan**  
Sales Representative, Vice-President  
D +1 613 696 2750  
ron.milligan@avisonyoung.com

Avison Young Commercial Real Estate Services, LP, Brokerage | 45 O'Connor Street, Suite 800 | Ottawa, ON K1P 1A4 | +1 613 567 2680 | avisonyoung.ca

All rights reserved. E. & O.E.: The information contained herein was obtained from sources which we deem reliable and, while thought to be correct, is not guaranteed by Avison Young.