

For Lease

Gibraltar Place - 1000 9th Avenue SW



highlights



Commercial Grade Gigabit
Fibre Internet Connection
included in the Op Costs!

LOW OPERATING COSTS

1 block to LRT

Landlord will turnkey

Building upgrades include HVAC, lobby



DOG FRIENDLY BUILDING

Your barketing manager is welcome!

Details

| | |
|-------------------------|--|
| Availability: | Immediately |
| Term: | Flexible Term |
| Net Rental Rate: | Market |
| Improvement Allowance: | Negotiable |
| Parking: | 1:500 sf; plenty of additional parking in the immediate area |
| Operating Costs: | \$13.50 psf (2017 est.) |

CONTACT:

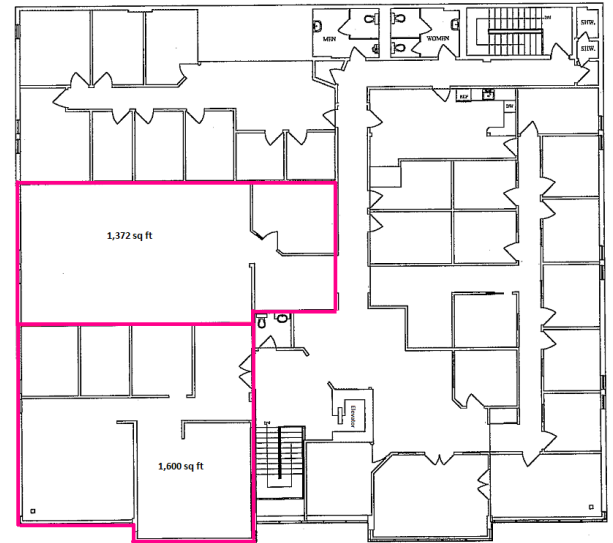
Lori King
Lori@COREcre.ca
403.618.8545

Jeff Thomson
Jeff@COREcre.ca
587.224.3550

For Lease

Gibraltar Place - 1000 9th Avenue SW

floor plans



Leased on usable square footage - no gross up!

