

FOR SUBLEASE  
A PORTION OF 8<sup>TH</sup> FLOOR  
**1050 WEST PENDER STREET**  
VANCOUVER, BC



**Hayden Elliott**  
Vice President  
604 640 5831  
[hayden.elliott@cushwake.com](mailto:hayden.elliott@cushwake.com)





# FOR SUBLEASE

## A PORTION OF 8<sup>TH</sup> FLOOR

# 1050 WEST PENDER STREET

### VANCOUVER, BC

#### BUILDING

1050 West Pender Street is situated adjacent to Bentall Centre. This central location offers ease of access to many restaurants and hotels, in addition, direct entry to the Bentall Centre food court and shopping concourse. It also offers direct underground access to the Burrard Skytrain station and the main Downtown bus loop.

#### SUITE DETAILS

- New improvements
- 1 boardroom
- 4 meeting room/offices
- Open plan with 35 workstations
- Shared kitchenette
- Reception area
- Server room
- Copy room
- Furniture available

#### AVAILABLE SPACE

Suite 850 ±5,300 sf

#### SUBLEASE TERM

3 years (flexible)

#### SUBLEASE RATE

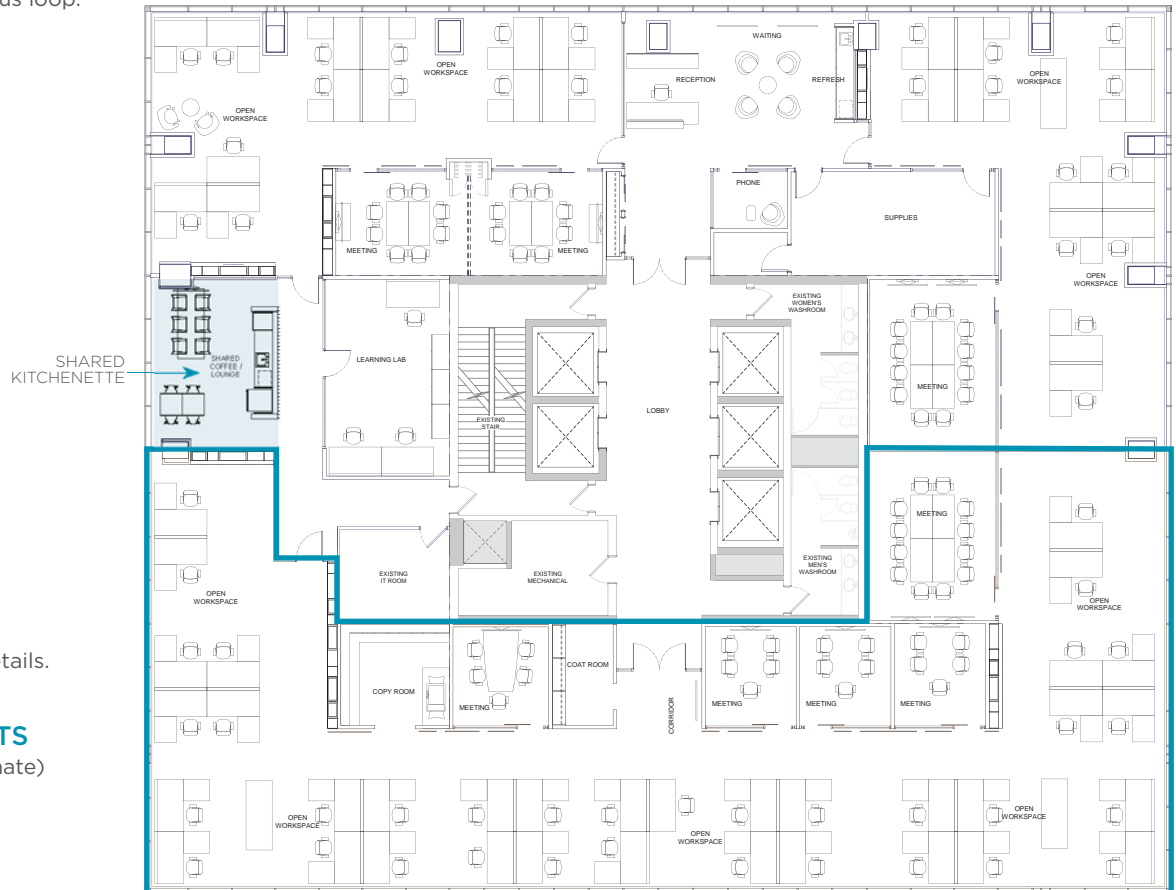
Please contact listing agent for details.

#### TAXES & OPERATING COSTS

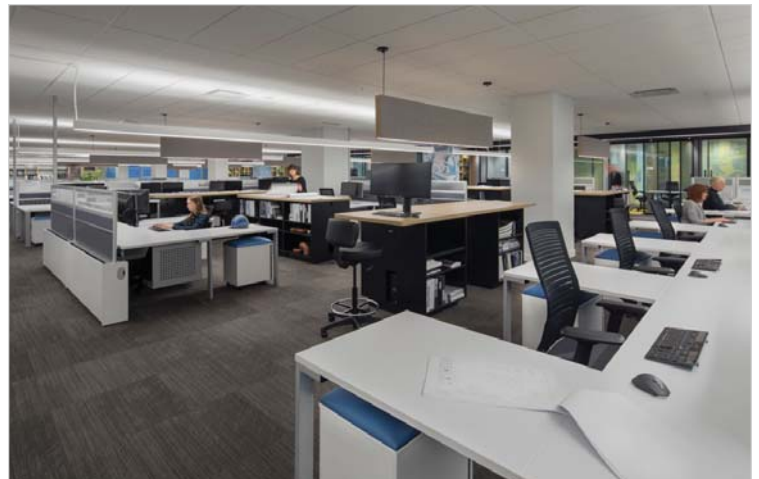
\$17.54 psf, per annum (2020 estimate)

#### AVAILABILITY

May 1, 2020



Plan for illustrative purposes only, may not be 100% accurate.



#### Hayden Elliott

Vice President

604 640 5831

hayden.elliott@cushwake.com



E.&O.E.: This communication is not intended to cause or induce breach of an existing agency agreement.

The information contained herein was obtained from sources which we deem reliable and, while thought to be correct, is not guaranteed by Cushman & Wakefield ULC 04/20 bg