



CUSHMAN &
WAKEFIELD



358-360

OFFICE SPACE
FOR SUBLEASE

Dufferin Street

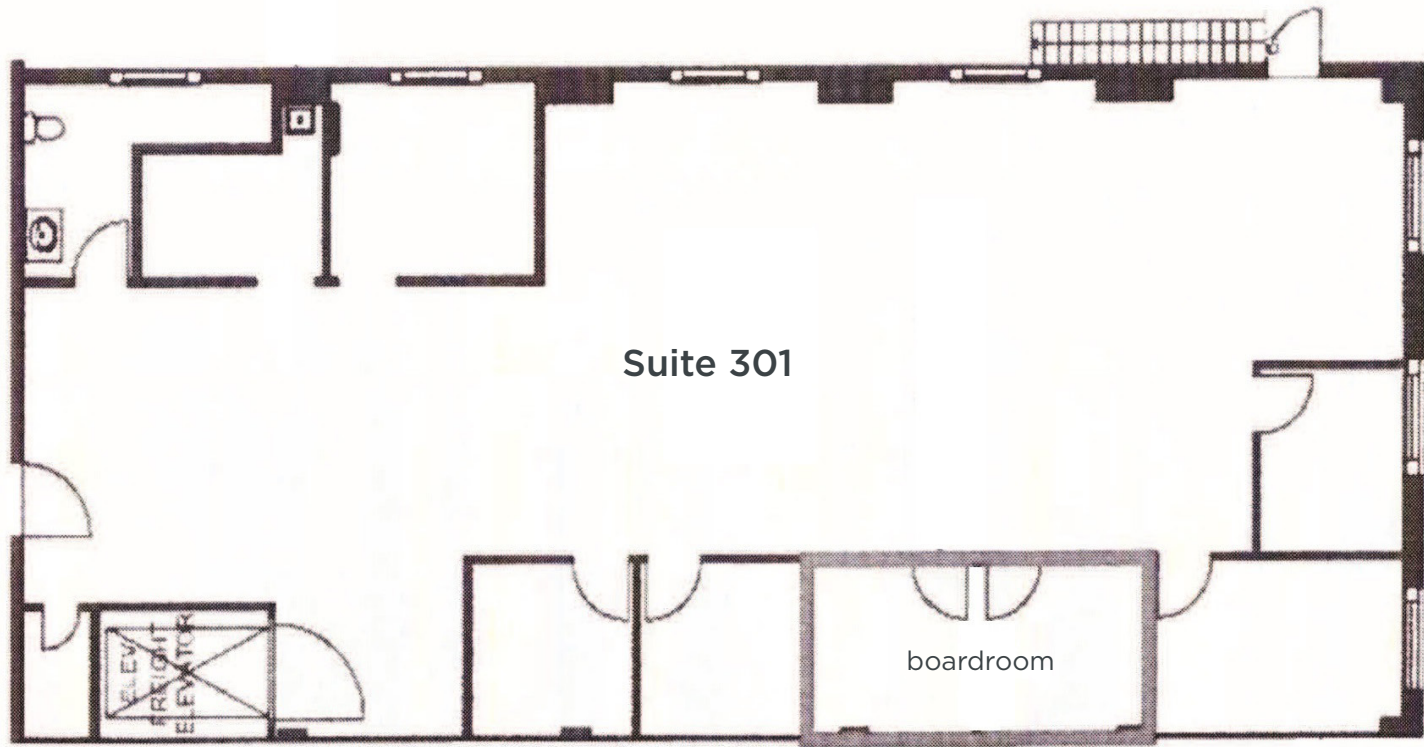
DETAILS

Available Space:	Suite 301 - 2,600 SF
Net Asking Rate:	Please contact subling agents
Additional Rent:	\$13.00 PSF (2020 est.) (excludes in-suite janitorial services)
Available:	Immediately
Term:	Until October 30, 2024

HIGHLIGHTS

- 23 work stations, 4 Meeting rooms, boardroom, 2 private offices, private washroom, kitchen
- High exposed ceilings
- Furniture may be available

FLOOR PLAN





FOR MORE INFORMATION PLEASE CONTACT:

MATTHEW MCTAVISH*

Vice President, Broker

416 659 0195

matthew.mctavish@cushwake.com

ANDREW BOUTILIER*

Senior Associate

416 359 2449

andrew.boutilier@cushwake.com

Cushman & Wakefield ULC, Brokerage *Sales Representative

No warranty or representation, expressed or implied, is made as to the accuracy of the information contained herein, and same is submitted subject to errors, omissions, change of price, rental or other conditions, withdrawal without notice, and to any specific listing condition, imposed by our principals.

