

FOR LEASE

MILLENNIUM

CENTRAL LONSDALE

125 & 145 East 13th Street, North Vancouver, BC

32,500 sf of office space available in North Vancouver's newest mixed-use development



Terry Thies*, Principal
604.646.8398
terry.thies@avisonyoung.com
**Terry Thies Personal Real Estate Corp.*

Ian Whitchelo*, Principal
604.647.5095
ian.whitchelo@avisonyoung.com
**Ian Whitchelo Personal Real Estate Corporation*

**AVISON
YOUNG**



NORTH SHORE CLASS A OFFICE



PROPERTY DETAILS

UNIT SIZES

Second Floor

Units from 957 sf to 9,920 sf

Third Floor

Units from 1,028 sf to 11,525 sf

ADDRESS

125 & 145 East 13th Street,
North Vancouver

AVAILABILITY

Estimated at late-2023

ASKING LEASE RATE NET RENT

Contact Terry Thies and
Ian Whitchelo

ADDITIONAL RENT

TBD

ZONING

CD-004* - This Comprehensive Development Zone permits a wide range of retail and office uses.

**Please contact listing team for a copy of the complete zoning bylawzoning bylaw is available upon request.*

PARKING

Secure underground parking on two levels for commercial tenants and visitors, accessed from the lane to the south. Monthly and hourly parking rates will apply.

OPPORTUNITY

Millennium Central Lonsdale presents commercial leasing opportunities in the heart of Central Lonsdale, the North Shore's premier business district.

This new development by Millennium offers two floors of exciting new office space demised accommodate a variety of tenant sizes, plus a main floor retail opportunity with premium exposure to the busy 13th Street traffic. This high-quality mixed-use development is comprised of an 18-storey residential tower, premium office and ground floor retail units. The development features an attractive pedestrian "mews" separating the east and west portions of the development. The development is located in the designated High Street of Central Lonsdale, close to Lions Gate Hospital, City Hall, and a variety of retail and professional businesses.

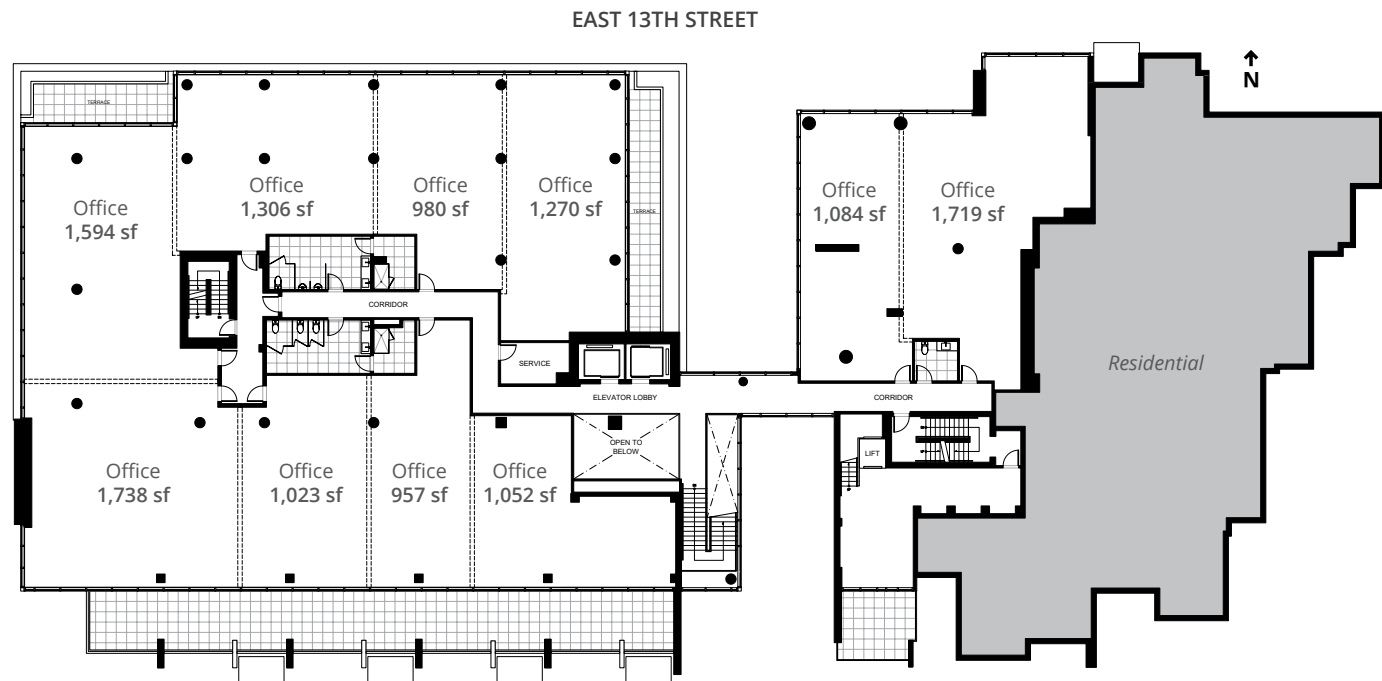


- Excellent location in North Vancouver's Central Lonsdale commercial hub
- Well-serviced by public transportation
- Underground parking for tenants and customers
- Multiple office units with sizes to accommodate almost any tenant requirement
- Bright open areas with high-ceilings, and some units with access to private exterior decks

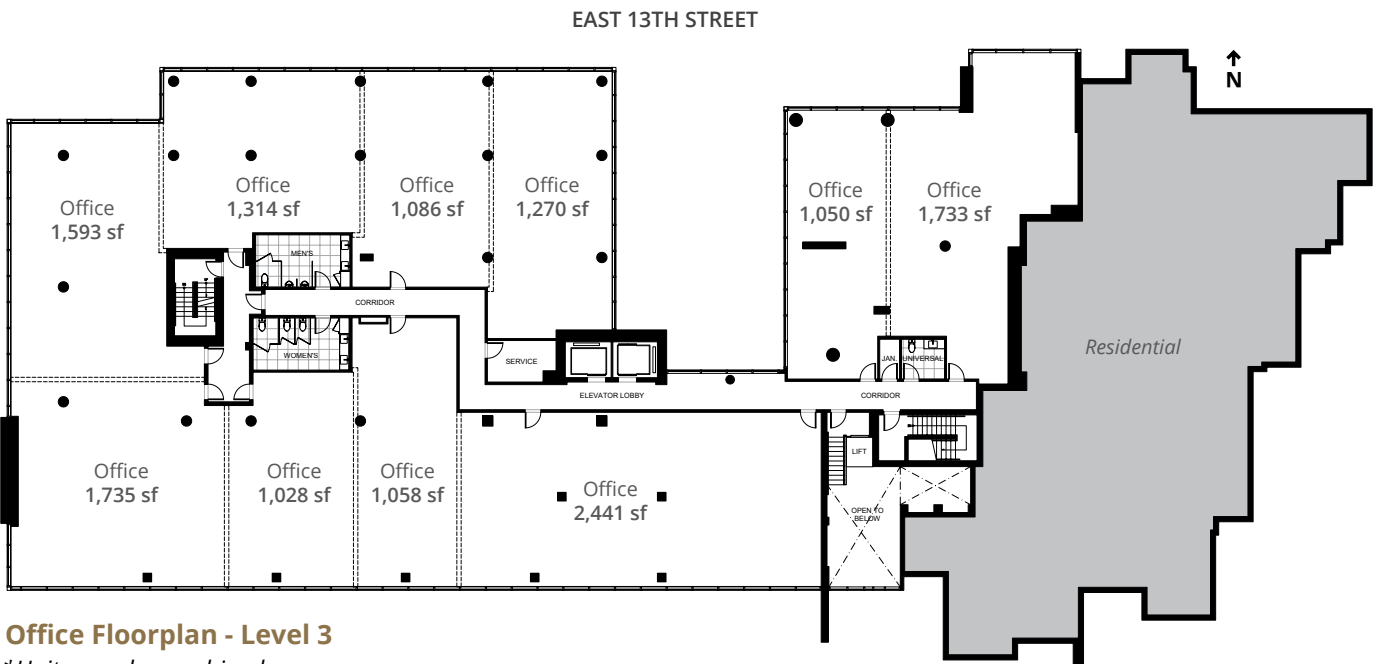
- Tenant amenities including fitness area, end of trip facilities, and secure bike storage
- Advanced air handling and filtration systems providing quality air exchanges throughout the day
- Some units offer views to the south towards downtown Vancouver
- Perfect for medical & dental uses at North Vancouver's "health care hub"

LOCATION

Millennium Central Lonsdale at 125 & 145 East 13th Street is located across Whole Foods Market adjacent to Lonsdale Avenue in North Vancouver's Central Lonsdale area, fronting the busy 13th Street traffic corridor. This location, in the regional city centre benefits from proximity to many community amenities including Lions Gate Hospital, North Vancouver City Library, and North Vancouver City Hall. The Upper Levels Highway is only four minutes away and Downtown Vancouver is accessible via the SeaBus at Lonsdale Quay in 20 minutes. Central Lonsdale has become a focal point of North Vancouver and is home to major financial institutions, abundant restaurants and cafes, fitness facilities, a variety of retail shops, and numerous medical, dental, and other professional office services.



Office Floorplan - Level 2
*Units may be combined



Office Floorplan - Level 3
*Units may be combined

AMENITIES

- BANK**
- 1. RBC Royal Bank
 - 2. CIBC
 - 3. HSBC
 - 4. BMO
 - 5. TD Canada Trust
 - 6. Scotiabank
 - 7. BlueShore Financial

- CAFÉS**
- 8. Chiptole
 - 9. JJ Bean Coffee Roasters
 - 10. Tim Hortons
 - 11. Blenz
 - 12. Take Five Café

- RESTAURANTS**
- 13. Browns Socialhouse
 - 14. Jack Lonsdale's Public House
 - 15. Zeitoon Restaurant
 - 16. Yaas Restaurant
 - 17. Bridge Deck Tasting Room
 - 18. Bravo Cucina

- GROCERY / PHARMACY**
- 19. London Drugs
 - 20. Loblaws City Market
 - 21. Shoppers Drug Mart
 - 22. Whole Foods
 - 23. Ayoub's Dried Fruits and Nuts

- FITNESS**
- 24. Oxygen Yoga & Fitness
 - 25. Steve Nash Fitness World
 - 26. Club 16 Trevor Linden Fitness



88

VERY WALKABLE
Most errands can be accomplished on foot

TO LONSDALE QUAY

Six minute drive

TO DOWNTOWN VANCOUVER

20 minute SeaBus ride

86

VERY BIKABLE
Biking is convenient for most trips

LIONS GATE BRIDGE

15 minute drive

TO TRANS-CANADA HIGHWAY 1

10 minute drive



For more information, please contact

Terry Thies*, Principal

604.646.8398

terry.thies@avisonyoung.com

**Terry Thies Personal Real Estate Corp.*

Ian Whitchelo*, Principal

604.647.5095

ian.whitchelo@avisonyoung.com

**Ian Whitchelo Personal Real Estate Corporation*

avisonyoung.com

© 2021 Avison Young. All rights reserved.

E. & O.E.: The information contained herein was obtained from sources that we deem reliable and, while thought to be correct, is not guaranteed by Avison Young Commercial Real Estate Services, LP ("Avison Young")



Platinum member