

Crown Property Management Inc.

5255 Yonge St Toronto

Be a part of the most enhanced workplace community
in the North Yonge business node

5255 Yonge Street, Toronto, ON

5255 Yonge Street | North Yonge's Premier Office Tower

Building Highlights



Modern Building

Upgraded entrance, lobby and common areas



Exceptional Location

North Yonge Business Node



Easy Access

Close to TTC Subway, GO Bus and Highways



On-Site Convenience

Cafe, tenant lounge, conference centre
and shuttle bus



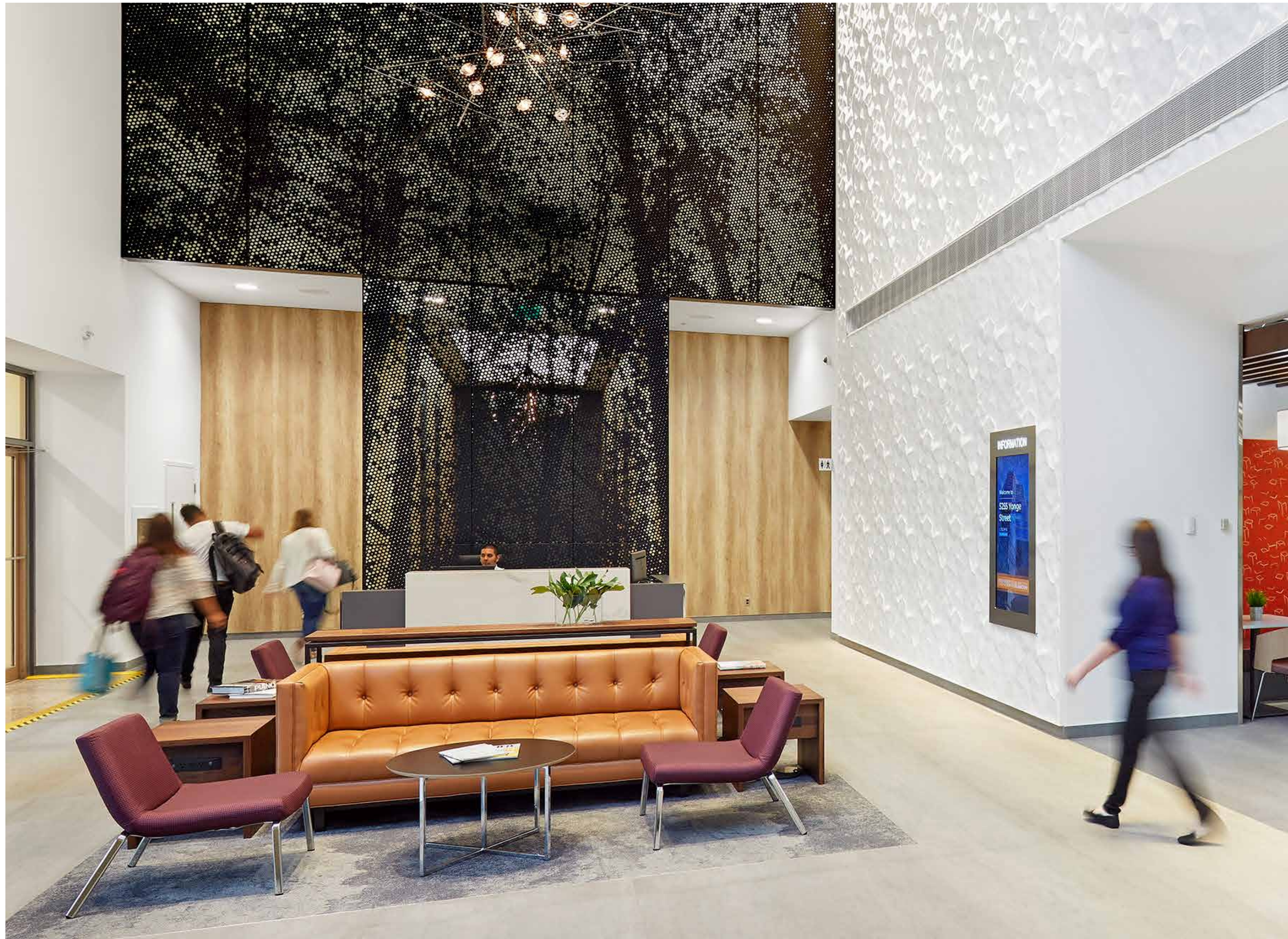
Amazing Amenities

Endless amenities within the area



Exceptionally Managed

Crown is here for you 24/7



Different Is Our Difference

Ever committed to the tenant experience 5255 Yonge Street is a well located, easily accessible office destination. Recent building upgrades such as a brand new lobby, elevator corridors, conference centre and a tenant lounge provide on-site conveniences while a wide variety of area amenities are right at your doorstep.

Tenant focused : Building upgrades to help you work better

5255 Yonge features a new lobby, tenant lounge, and building entrance (coming 2021)

Shown : Award-winning lobby renovation project

Suite Specialists

5255 Yonge Street is home to the largest model suite ever built in the GTA - a modern, fully functional, move-in ready space in Toronto's North Yonge business node. This investment, along with the numerous building upgrades, is a testament to Crown's commitment to the building and the tenants operating within it.

Shown: Suite 600 at 5255 Yonge Street - the largest model suite ever built and leased in the GTA!



Move-in ready suites : Designed for performance

Our well designed, efficient and modern model suites to allow tenants to move in with ease.

The Transformation

Creating an unparalleled workplace experience

Large-scale capital plans have recently been completed throughout 5255 Yonge!



Fully renovated building lobby

Completed 2020



Upgraded elevator lobbies

Completed 2020



Brand new tenant lounge and common area

Completed 2020



Upgraded and enhanced building entrance

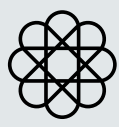
Coming 2021



Award Winning Lobby



Added Benefits for Tenants



Sleek and modern

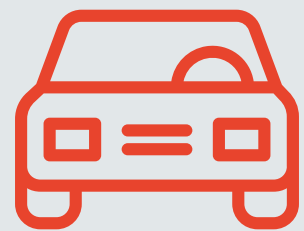


Make a great first impression

5255 Yonge Street | North Yonge's Premier Office Tower

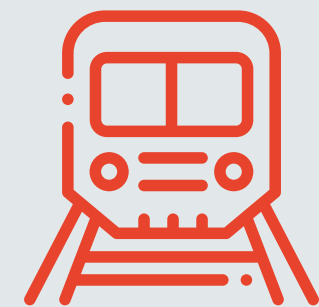
Commute Better

Get to and from work hassle free.



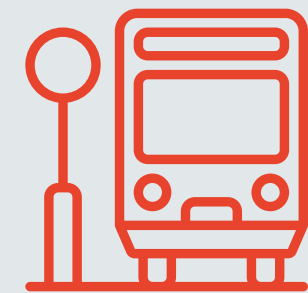
Car

With 1.5/1,000 SF underground parking, your staff can commute in comfort. Car wash and tune up stations available on site.



Public Transit

Located minutes from North York Centre Station, Finch Station and GO Station with access to both Sheppard and Yonge/University TTC Subway lines.



Shuttle Bus

A dedicated shuttle gets you to and from the subway and GO every 15 minutes during morning and afternoon commutes.





5255 Yonge Street | North Yonge's Premier Office Tower

Lunch Better

Unparalleled convenience and amenity options right at your doorstep.

Attractions

- Yonge Sheppard Centre | 4 mins
- Bayview Village Shopping Centre | 8 mins
- CF Fairview Mall | 15 mins
- CF Shops at Don Mills | 20 mins

Legend

- Restaurants
- Banks
- Coffee Shops
- Fitness

Plan Better



Work more efficiently.




Work more efficiently with average floor plates of 18,738 SF with plenty of long term room for expansion. The bright, sunlight abundant suites of 5255 Yonge provide lots of natural light which equals happier and more productive employees.

The flexible floor plates of the building allow for a variety of design options, as well as the ability to lay out your office space to promote workplace health, safety and physical distancing.

Suites ranging from:

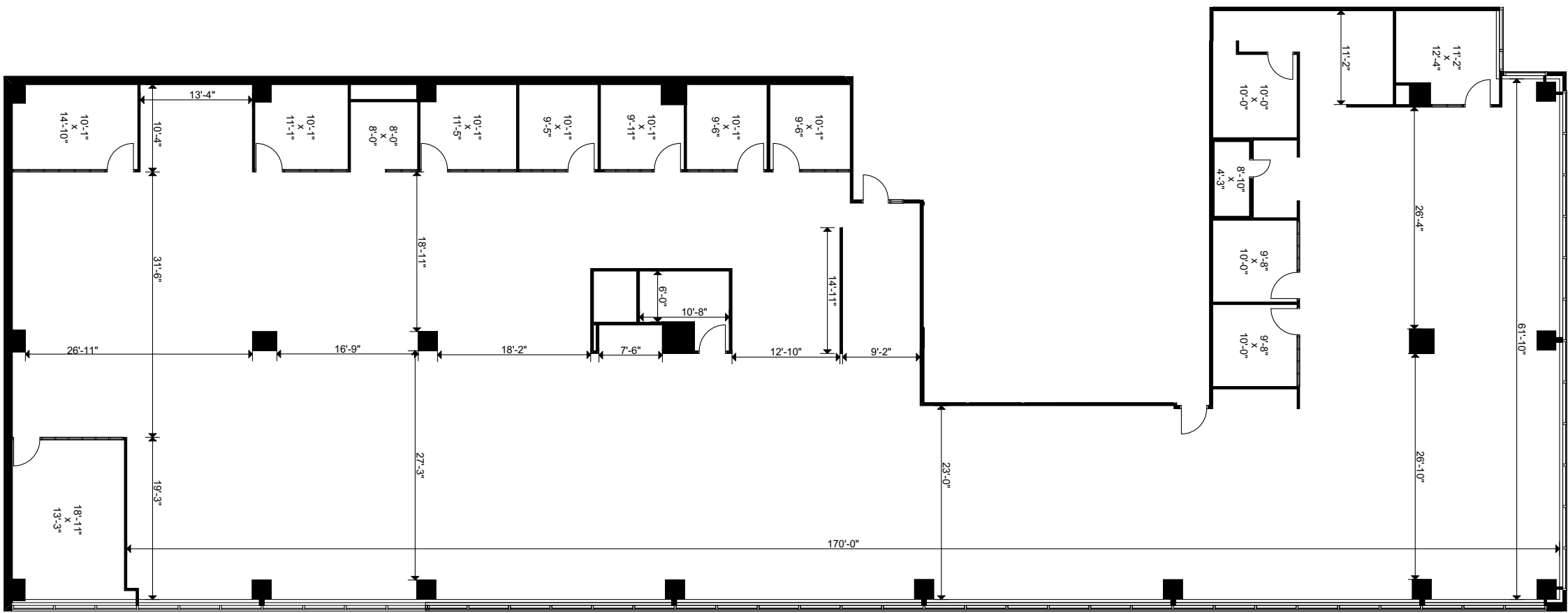
1,021 - 12,913 sf

Current leasing availabilities

	Suite	Area (SF)	Net Rent (PSF)	Availability	Comments
	201	12,913 SF	\$20.50	Immediate	Built-out suite with 12 offices plus open for workspaces.
	410	4,021 SF	\$20.50	Immediate	Newly available space, ready for fixturing.
	901 - Model Suite	6,891 SF	\$20.50	09/30/2020	Covid Safe Suite available September 30, 2020.
	1000	8,208 SF	\$20.50	Immediate	Built out suite with 14 private offices and open concept space.
	1050	7,859 SF	\$20.50	11/01/2020	Move-in ready suite coming soon!
	1201	3,776 SF	\$20.50	Immediate	Built out suite with reception, meeting rooms, offices, open area and kitchen.
	1202	1,021 SF	\$20.50	Immediate	Small suite with 3 private offices.
	1205	3,409 SF	\$20.50	Immediate	Built-out suite with collaborative kitchen lounge, meeting room, private offices, open area for workstations and storage room. Contiguous to neighboring suites for up to 7,956 SF.
	1500	12,325 SF	\$20.50	Immediate	Full floor opportunity with existing build-out in place, featuring a walk-out rooftop patio!

Floor Plan

Suite 201
12,913 SF

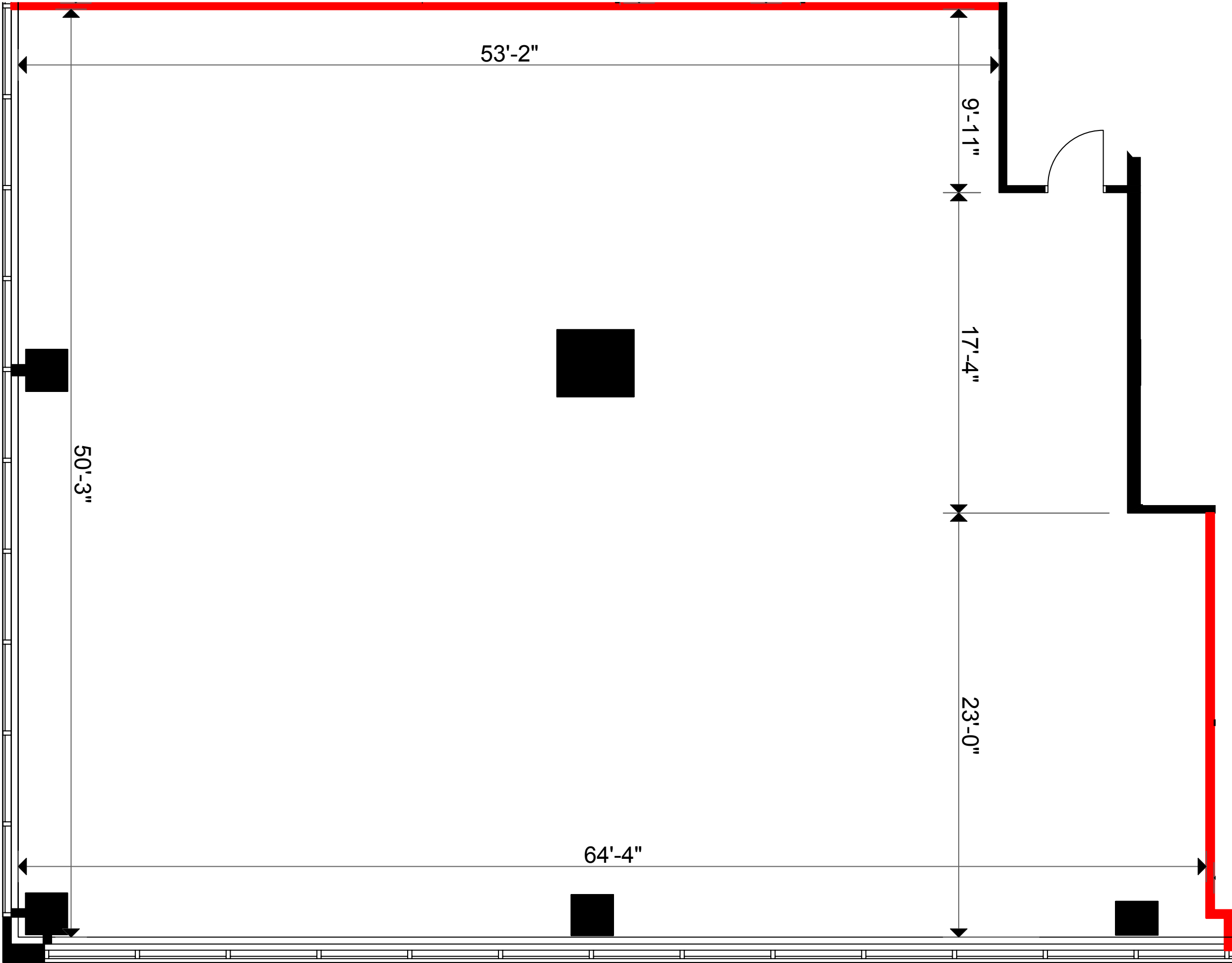


Floor Plan



Suite 410

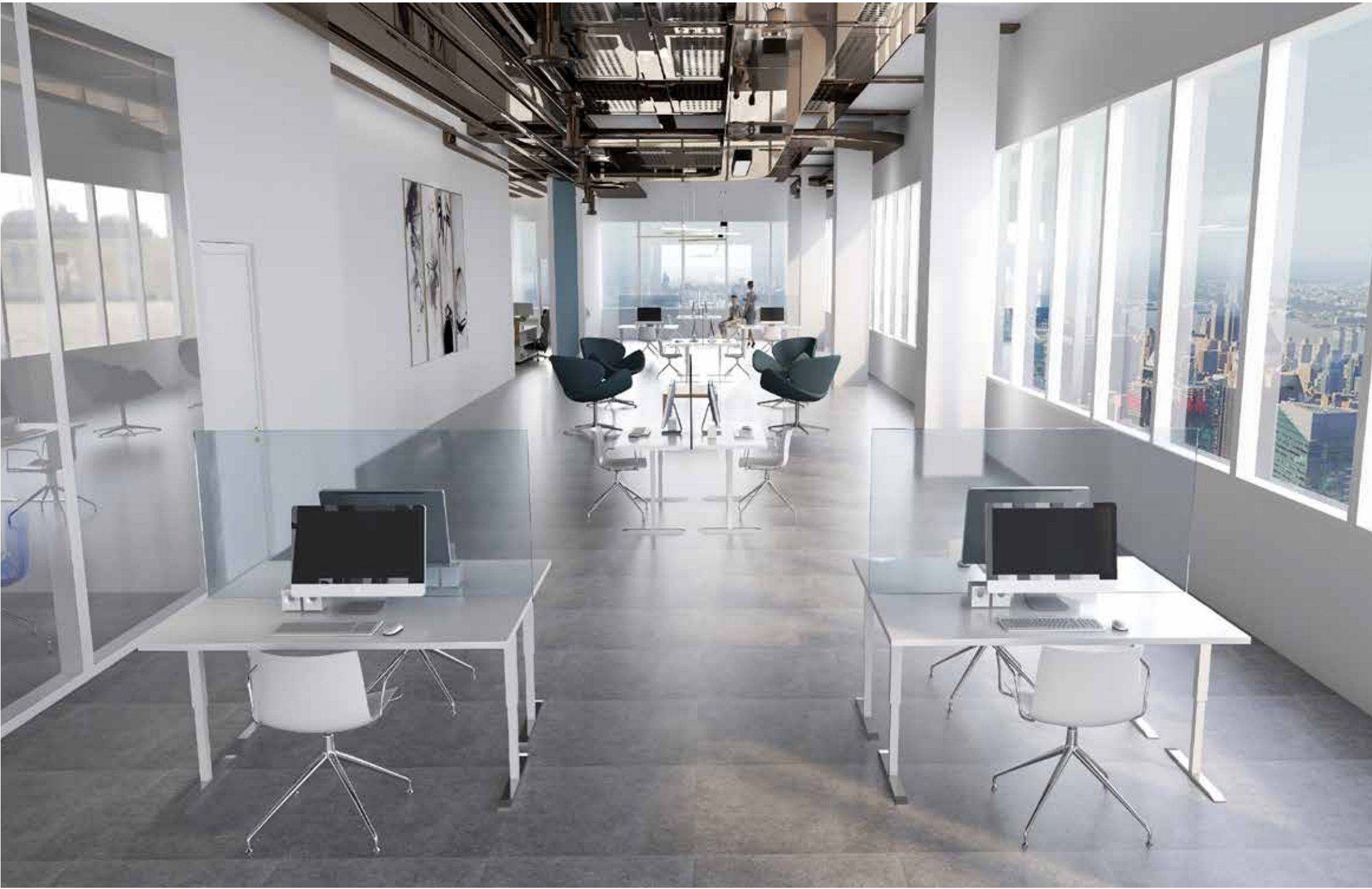
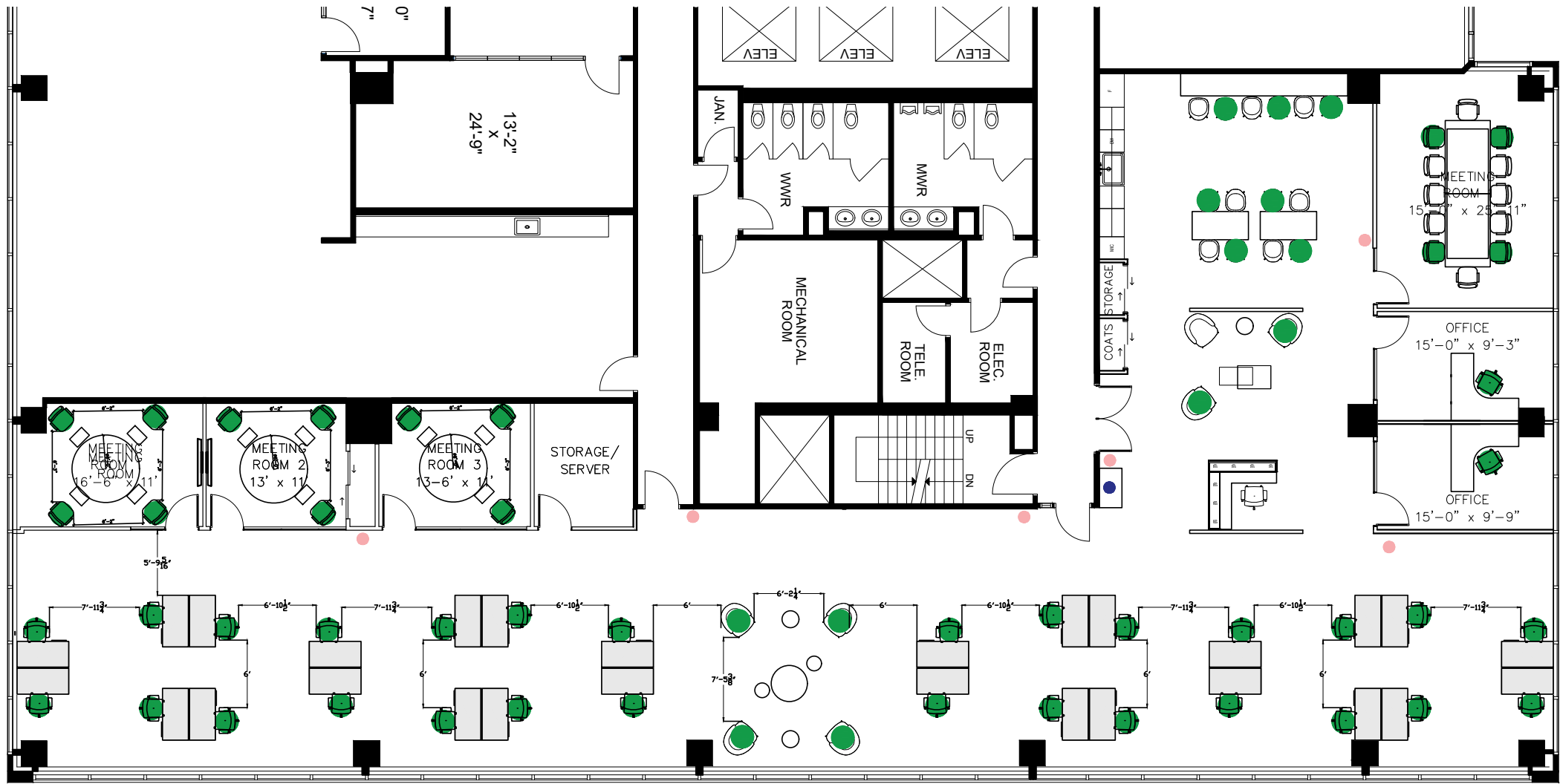
4,021 SF



Floor Plan

Suite 901 : COVID-19 Safe Suite

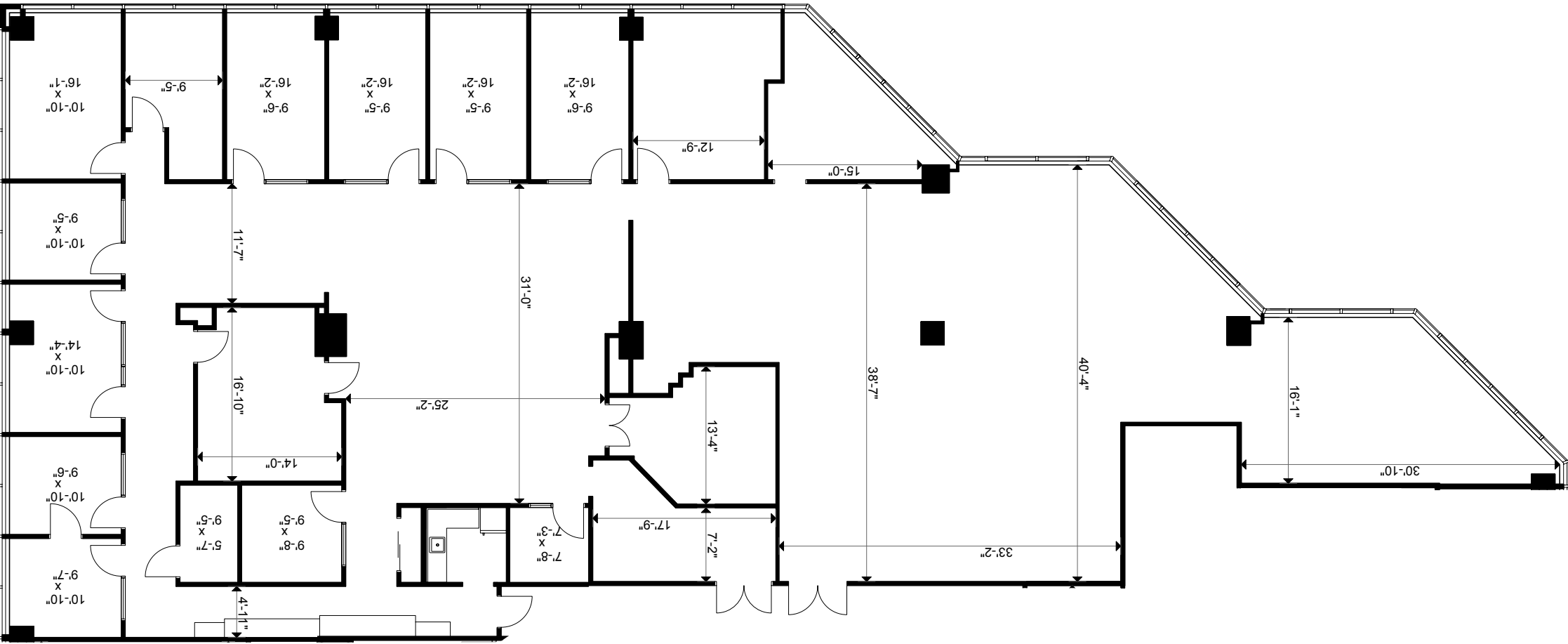
6,891 SF



Floor Plan



Suite 1000
8,208 SF



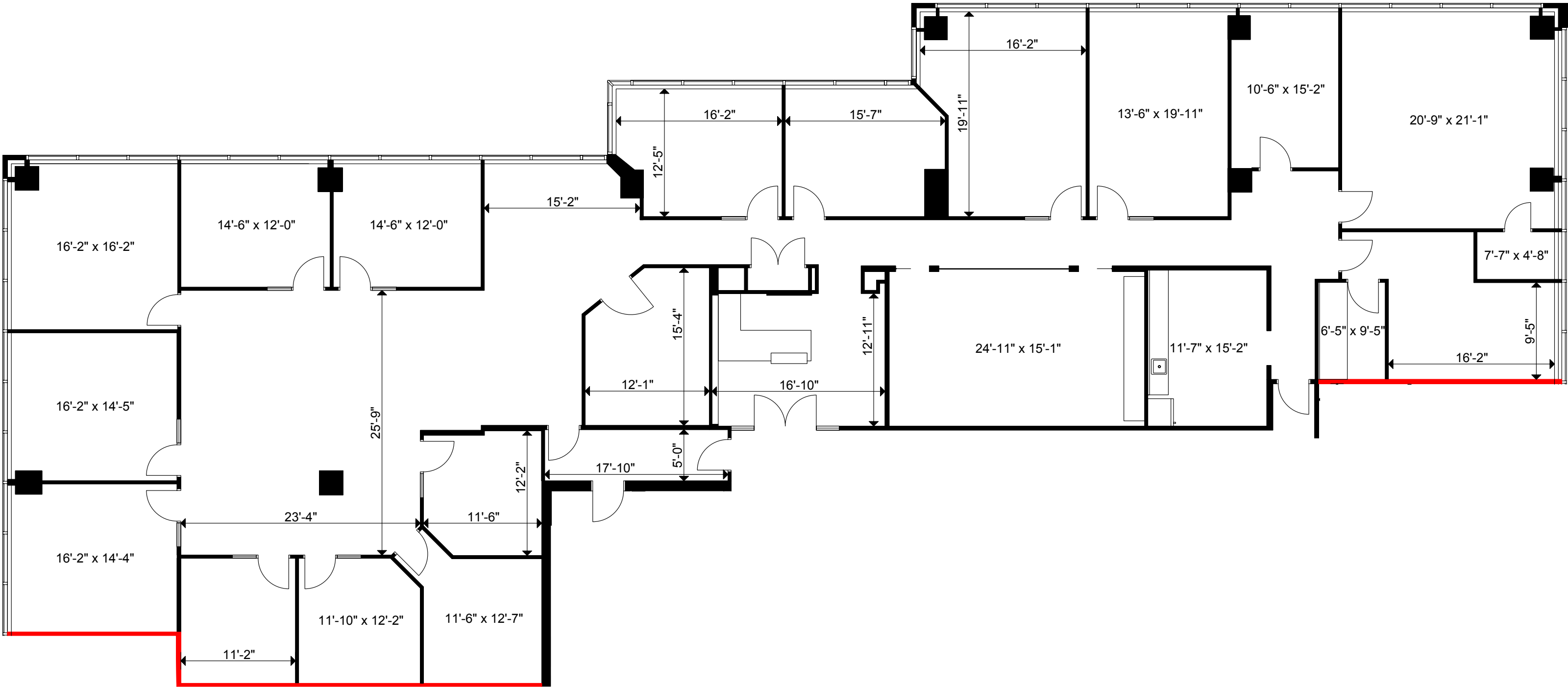
Floor Plan



Coming November 2020!

Suite 1050

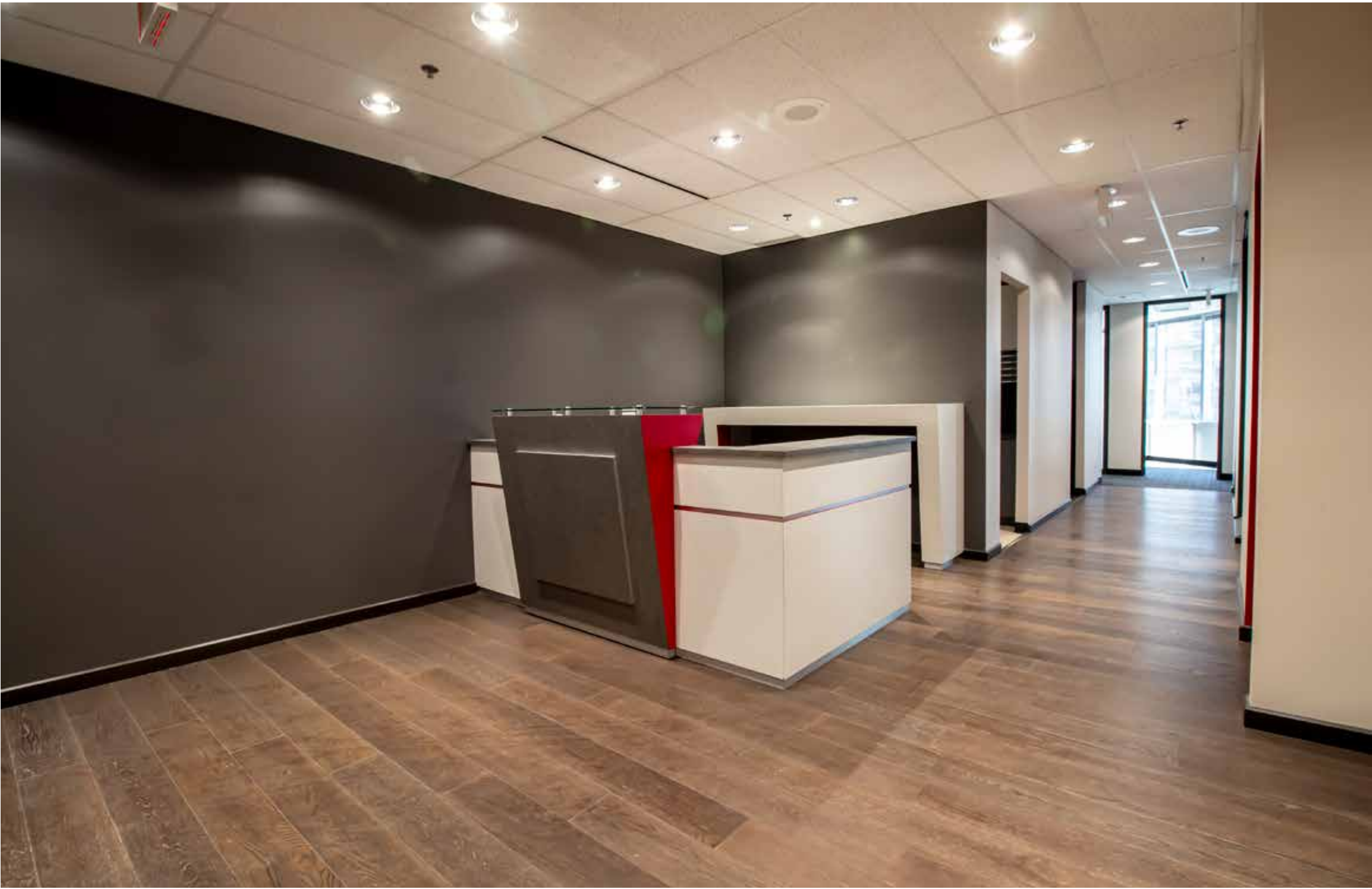
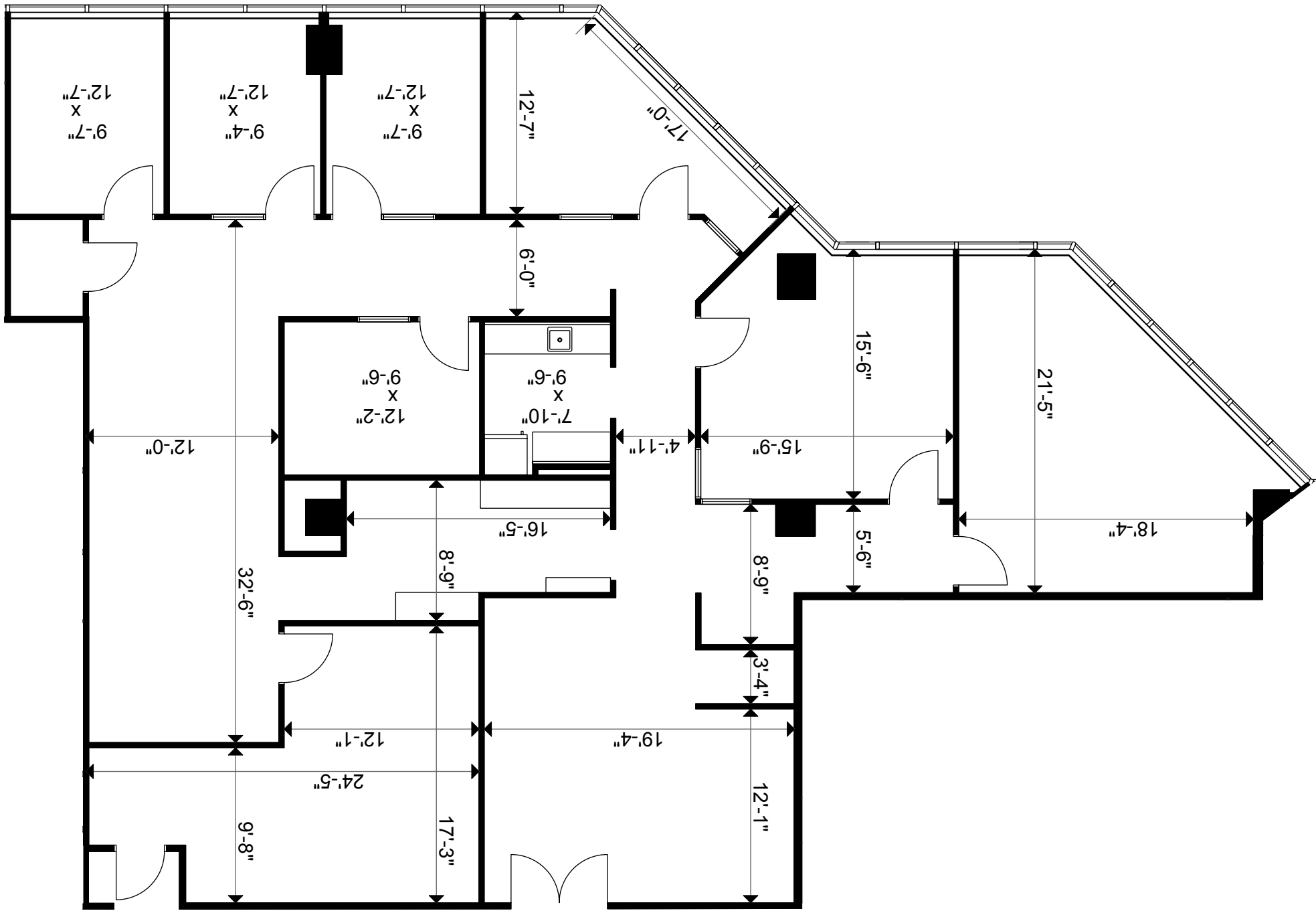
7,859 SF



Floor Plan

Suite 1201

3,776 SF

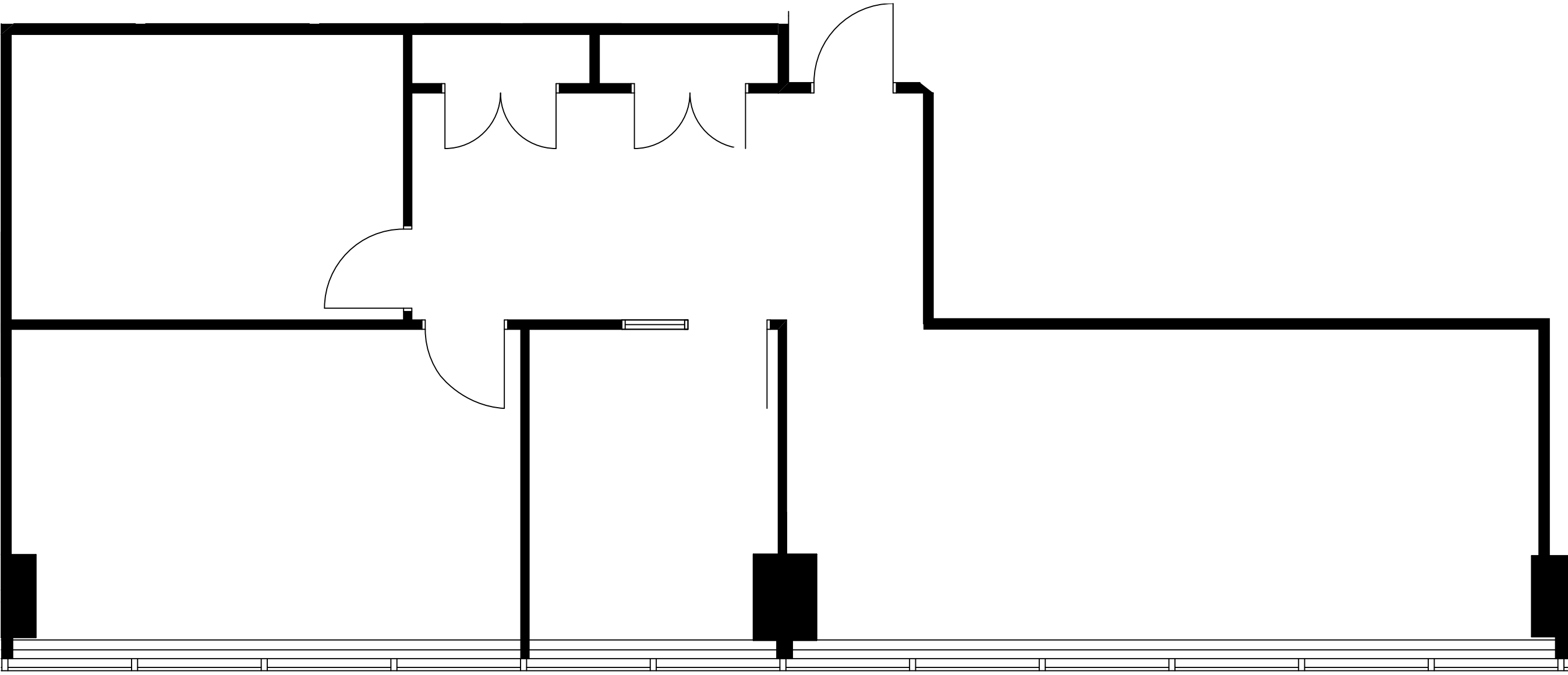


Floor Plan



Suite 1202

1,021 SF

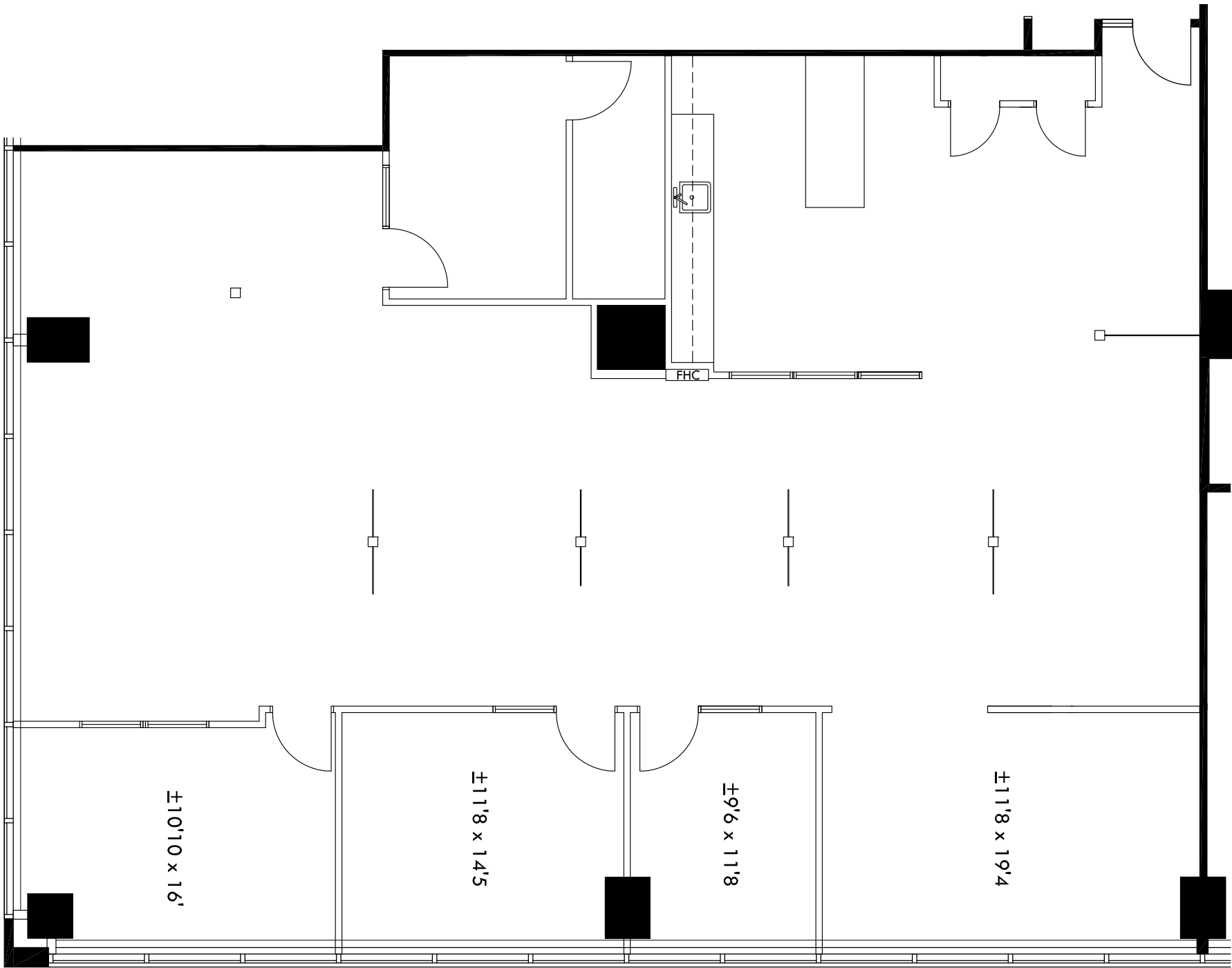


Floor Plan



Suite 1205

3,409 SF

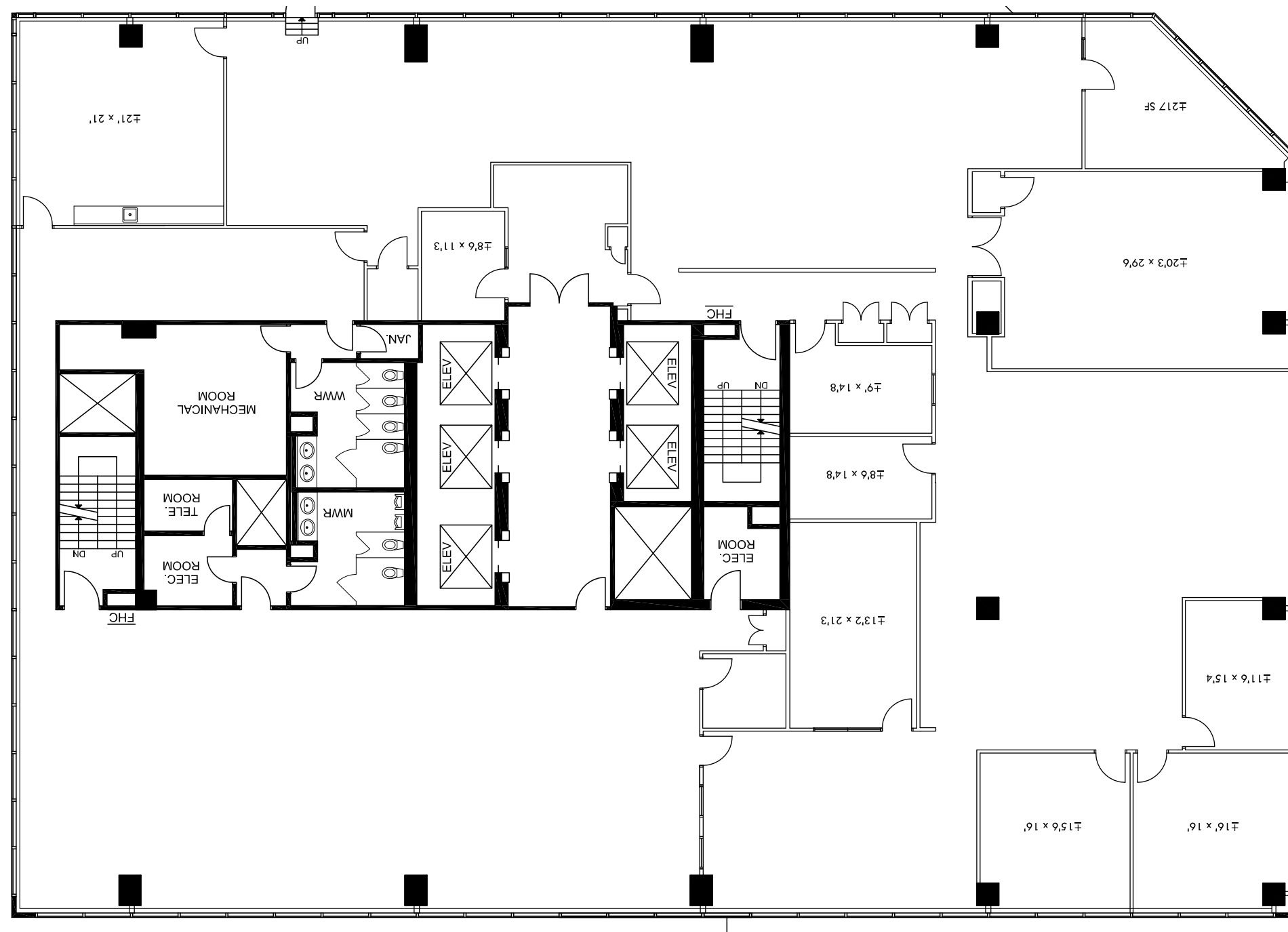


5255 Yonge Street | North Yonge's Premier Office Tower

Floor Plan

Suite 1500

12,325 SF



CROWN

Get In Touch!

**If you would like more information about 5255 Yonge St
or if you'd like to arrange a tour, please contact:**

Christina Karam*

Director, Leasing

416.572.3000

ckaram@crp-cpmi.com