



FOR LEASE

UNIT 201

998 HARBOURSIDE DRIVE

NORTH VANCOUVER, BC



WELL LOCATED 954 SF STRATA OFFICE



Brad Newman-Bennett

Personal Real Estate Corporation

Vice President

Capital Markets - Investment Sales

604 640 5860

brad.newman-bennett@cushwake.com

Brandon Buziol

Associate

Capital Markets - Investment Sales

604 640 5883

brandon.buziol@cushwake.com



FOR LEASE

UNIT 201

998 HARBOURSIDE DRIVE
NORTH VANCOUVER, BC

LOCATION

The subject property is situated at the end of Harbourside Drive (near the North Shore Automall) in North Vancouver's only waterfront business park.

THE BUILDING

998 Harbourside Drive was one of the first developments in the Harbourside Business Park, constructed in 2005. The building offers a prominent location at the end of Fell Avenue, with attractive landscaping and architecture, the building offers excellent street appeal.

FEATURES

- Separate HVAC & controls
- Two (2) parking stalls
- Open plan, ample natural light
- Serviced by public transit
- Easy access to Kings Mill Park & Spirit Trail, the North Shore's scenic waterfront, fully accessible greenway

UNIT SIZE

954 sf second floor offices
Two private offices with open area and Kitchenette

ZONING

CD-360, providing for a wide range of service commercial and light industrial office uses

AVAILABLE

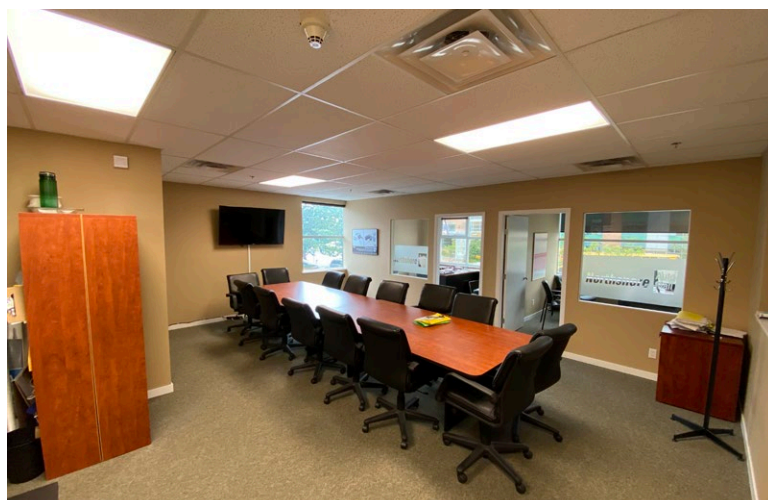
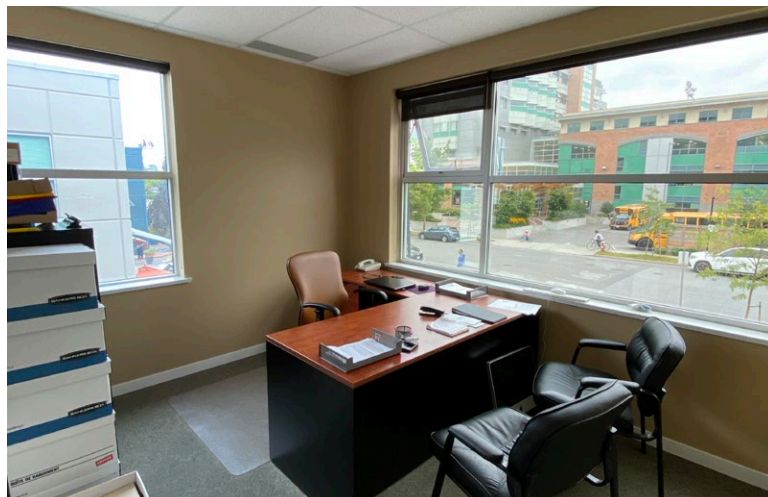
September 1, 2020

ASKING BASE RENT

\$20 psf

PROPERTY TAXES

\$6.87 psf (2020)



Brad Newman-Bennett

Personal Real Estate Corporation
Vice President
Capital Markets - Investment Sales
604 640 5860
brad.newman-bennett@cushwake.com

Brandon Buziol

Associate
Capital Markets - Investment Sales
604 640 5883
brandon.buziol@cushwake.com

E.&O.E.: This communication is not intended to cause or induce breach of an existing agency agreement.

The information contained herein was obtained from sources which we deem reliable and, while thought to be correct, is not guaranteed by Cushman & Wakefield ULC 07/20 gh