



**CUSHMAN &
WAKEFIELD**

FOR LEASE

2160 SPRINGER AVENUE

BURNABY, BC

12,000 SF OFFICE/WAREHOUSE

DOWNTOWN
VANCOUVER

BOUNDARY RD

BRENTWOOD
TOWN CENTRE

WILLINGDON AVE

SPRINGER AVE

LOUGHEED HWY

Sean Ungemach*
SBU Realty Advisors Ltd.
Executive Vice President
604 640 5823
sean.ungemach@cushwake.com

Jeffrey Schatz
Senior Associate
604 608 5968
jeff.schatz@cushwake.com



**CUSHMAN &
WAKEFIELD**

FOR LEASE 2160 SPRINGER AVENUE BURNABY, BC

OPPORTUNITY

To lease a quality office and warehouse facility in a superb North Burnaby location, comprised of two levels of finished office space and light storage mezzanine warehouse with dock level access.

LOCATION

The property is located in the Brentwood Town Center area of North Burnaby. Access to the property is via Lougheed Highway and Springer Avenue. The TransCanada Highway is located just minutes south of the subject property with access via Willingdon or Kensington interchanges. The Holdom SkyTrain station is a short 5 min walk away.

ZONING

M-2 (Light Industrial)

AVAILABLE AREA (APPROXIMATE)

Office Area (on two levels)	6,670 sf
Warehouse	5,330 sf
Total Area	12,000 sf

LOADING

1 dock loading bay

LEASE RATE

\$12.50 psf

ADDITIONAL RENT

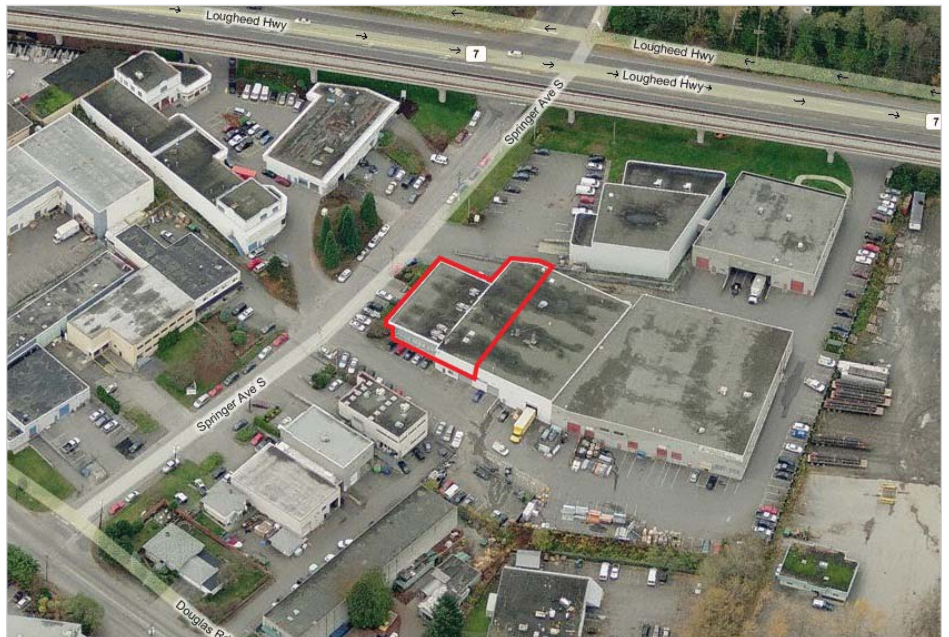
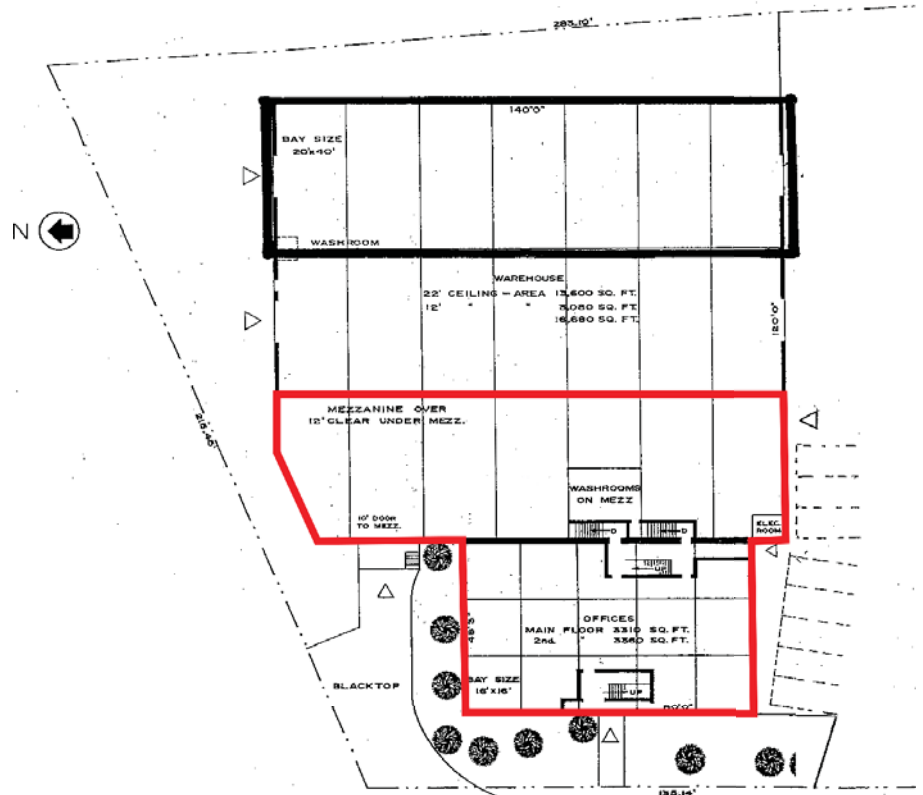
\$7.20 psf

PARKING

23 stalls

AVAILABLE

Please contact Listing Agents



Sean Ungemach*

SBU Realty Advisors Ltd.
Executive Vice President
604 640 5823
sean.ungemach@cushwake.com

Jeffrey Schatz

Senior Associate
604 608 5968
jeff.schatz@cushwake.com

*Sean Ungemach is licensed with SBU Realty Advisors Ltd. and has a contractual relationship with Cushman & Wakefield ULC
E.&O.E.: This communication is not intended to cause or induce breach of an existing agency agreement.

The information contained herein was obtained from sources which we deem reliable and, while thought to be correct, is not guaranteed by Cushman & Wakefield ULC 09/20 bg