

# For Sublease

8545/8547 Commerce Court  
Imperial Square Lake City  
Burnaby, BC



## DEVENCORE



Centrally located, easy access  
to Skytrain and Hwy 1



## Property Details

- Building Name Imperial Square
- Building Size 170,000 sq.ft.
- Year Built 1987
- Parking 7 stalls included

## Sublease Details

- Size 3,400 sq.ft.
- Term September 29, 2021
- Rental Rate Contact listing agent
- Operating Expenses \$8.42 per sq.ft. (Est. 2020)
- Availability 30 days notice

John Wu

Personal Real Estate Corporation | Vice President

604.697.3057

johnwu@dcrcanada.com



# For Sublease

8545/8547 Commerce Court  
Imperial Square Lake City  
Burnaby, BC

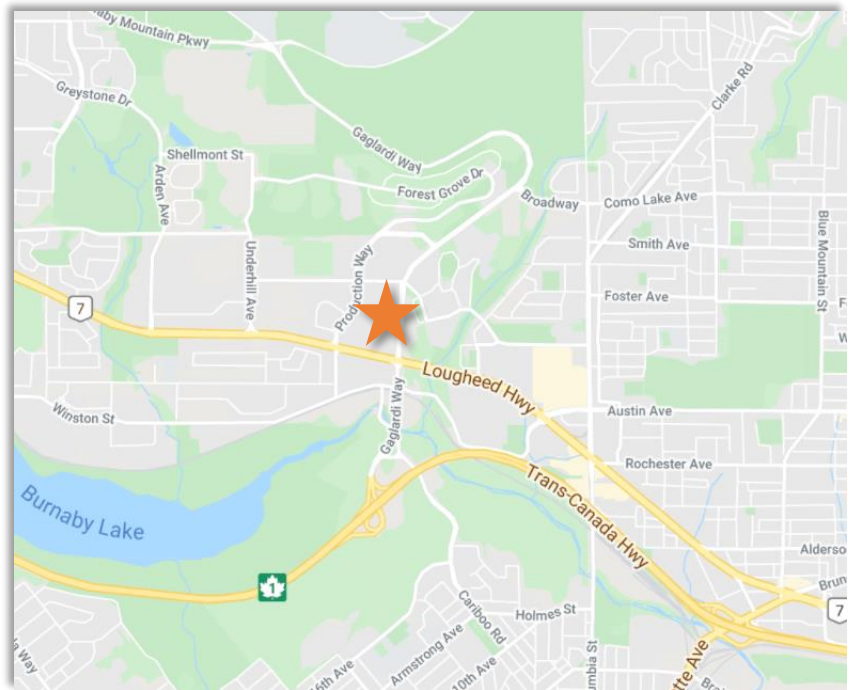


## DEVENCORE



## Property Highlights

- 6 Minute walk to Production Way- University Skytrain Station
- Multiple offices
- Boardroom
- Open area
- Storage
- Furniture available for purchase
- Zoning M5/B2

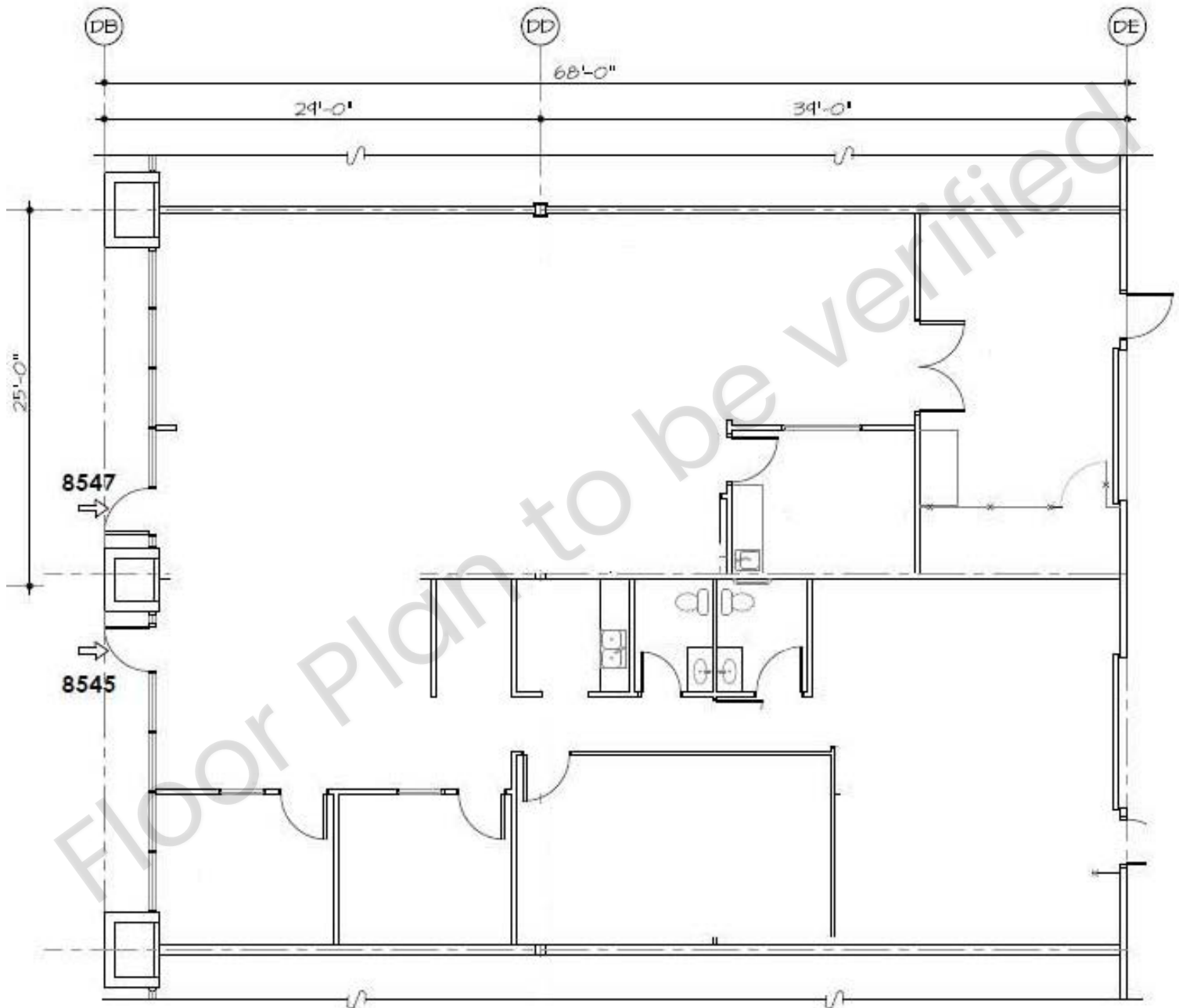


# For Sublease

8545/8547 Commerce Court  
Imperial Square Lake City  
Burnaby, BC



## DEVENCORE



*This communication is intended for general information only and not to be relied upon in any way. Consequently, no responsibility or liability whatsoever can be accepted by Devencore for any loss or damage resulting from any use of, reliance on or reference to the contents of this document, including hypertext links to external sources. In addition, as a general communication, this material does not necessarily represent the view of Devencore in relation to particular properties or projects. This communication is not intended to cause or induce breach of any agency agreement. Reproduction or distribution of this communication in whole or in part is not allowed without prior written approval of Devencore.*

