



FOR SALE

1405 & 1409 BEWICKE AVENUE

North Vancouver, BC

Strata Office Opportunities for Sale in North Vancouver

Terry Thies*, Principal
604.646.8398
terry.thies@avisonyoung.com
**Terry Thies Personal Real Estate Corp.*

Ian Whitchelo*, Principal
604.647.5095
ian.whitchelo@avisonyoung.com
**Ian Whitchelo Personal Real Estate Corporation*

**AVISON
YOUNG**

1405 & 1409 Bewicke Avenue

North Vancouver, BC

PROPERTY DETAILS

ZONING

CS-1

CURRENT TENANCIES

1405 Bewicke (Meridian Spa), portion of SL 2 on main floor (1,029 sf)

1409 Bewicke (Morrow Engineering), potion of SL 2 and SL 3 combined on main and second floor (2,367 sf plus 189 sf storage)

Strata Lot 2

SIZE

2,793 sf (main and second floors)

PID

003-363-953

PROPERTY TAX (2020)

\$6,247.34

STRATA FEES

\$558.60 per month

ASKING PRICE

\$1,815,450

Strata Lot 3

SIZE

792 sf (second floor)

PID

003-363-970

PROPERTY TAX (2020)

\$1,711.28 (2020)

STRATA FEES

\$158.40 per month

ASKING PRICE

\$514,800



LOCATION

1405 and 1409 Bewicke Avenue are situated on Bewicke Avenue and West 14th Street in North Vancouver. Conveniently located just North of the Marine Drive retail corridor and in close proximity to major transit routes, plus, within walking distance of Capilano Mall, Capilano Village (Bed Bath & Beyond) and Capilano Square (Save-On-Foods). The Building is a two level wood frame commercial building constructed in 1973. Strata lot 2 is on two levels, has a gross area of 2,793. Strata lot 3 is a 792 sf second floor unit that is leased in conjunction with the second floor portion Strata lot 2.

FEATURES



Improved commercial spaces (office space/spa)



Air conditioning



Kitchen



Private washrooms



Abundant parking



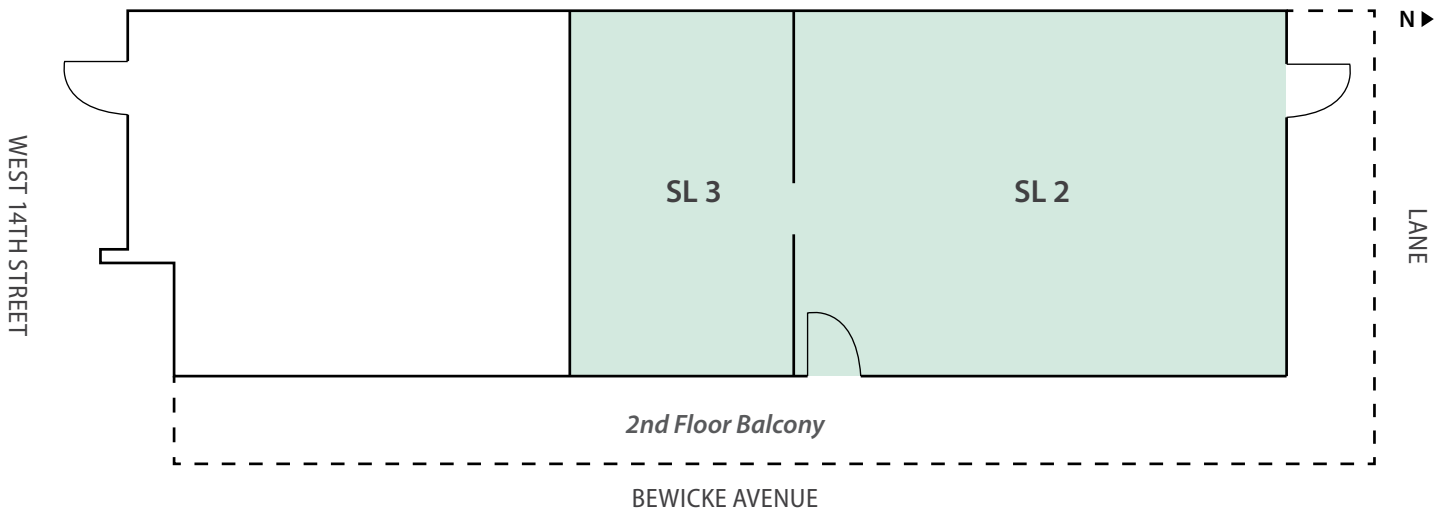
Well-served by public transportation



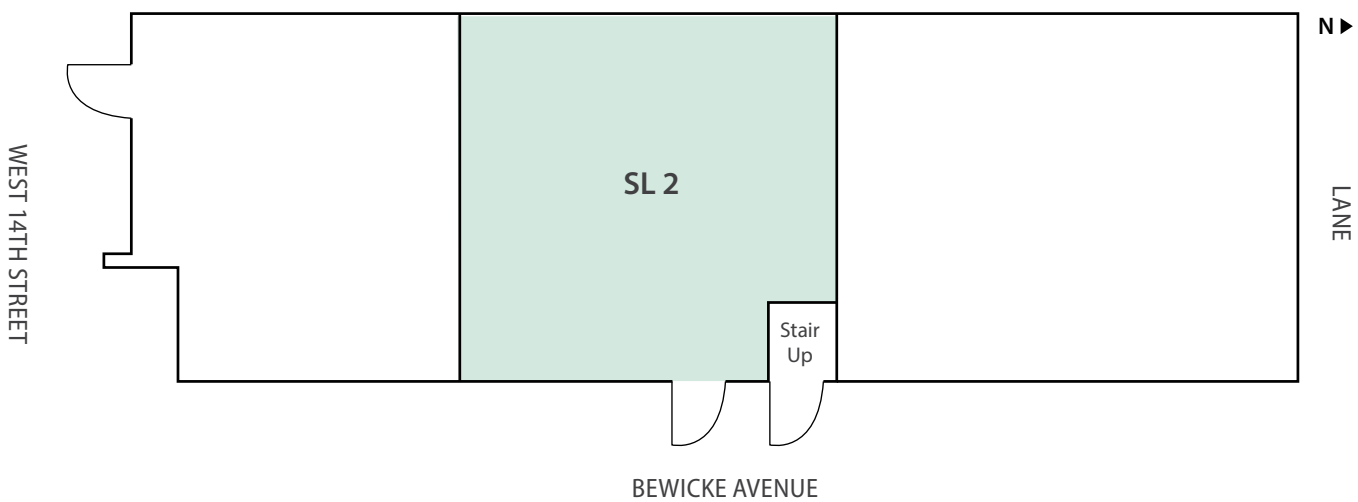
Exterior Patios

FLOORPLAN

SECOND FLOOR



MAIN FLOOR





Avison Young
#2900-1055 W. Georgia Street
Box 11109 Royal Centre, Vancouver, BC V6E 3P3, Canada



[avisonyoung.com](https://www.avisonyoung.com)

Terry Thies*, Principal
604.646.8398
terry.thies@avisonyoung.com
**Terry Thies Personal Real Estate Corp.*

Ian Whitchelo*, Principal
604.647.5095
ian.whitchelo@avisonyoung.com
**Ian Whitchelo Personal Real Estate Corporation*

© 2021 Avison Young. All rights reserved.
E. & O.E.: The information contained herein was obtained from sources that we deem reliable and, while thought to be correct, is not guaranteed by Avison Young Commercial Real Estate (B.C.) Inc.; DBA, Avison Young.