



**CUSHMAN &
WAKEFIELD**

FOR LEASE

**2886 COMMERCIAL DRIVE
VANCOUVER, BC**



Kyle Wilson

Associate Vice President
604 608 5941
kyle.wilson@cushwake.com

Craig Haziza*

President CAH Realty Inc.
Retail Sales and Leasing
604 640 5891
craig.haziza@cushwake.com



**CUSHMAN &
WAKEFIELD**

FOR LEASE

2886 COMMERCIAL DRIVE

VANCOUVER, BC

OPPORTUNITY

To lease an approximate 5,697 SF building currently improved as an automotive repair shop; the space offers 5 service bays, ground and mezzanine level storage, plenty of surface parking, front desk/reception area and waiting room.

LOCATION

The subject property is located at the corner of East 13th and Commercial Drive. Commercial Drive is at the heart of the Grandview-Woodland neighborhood. The area is an excellent destination for a variety of local restaurants, cafes, shops and services.

FEATURES

- Large surface parking lot
- Close proximity to Commercial Broadway Station
- Surrounded by a vibrant mixture of restaurants and amenities

SITE AREA

13,992 sf

BUILDING AREA

Main Floor	5,187 sf
Mezzanine	510 sf
Total Area	5,697 sf

TERM

Approximately 2 years

ASKING RATE

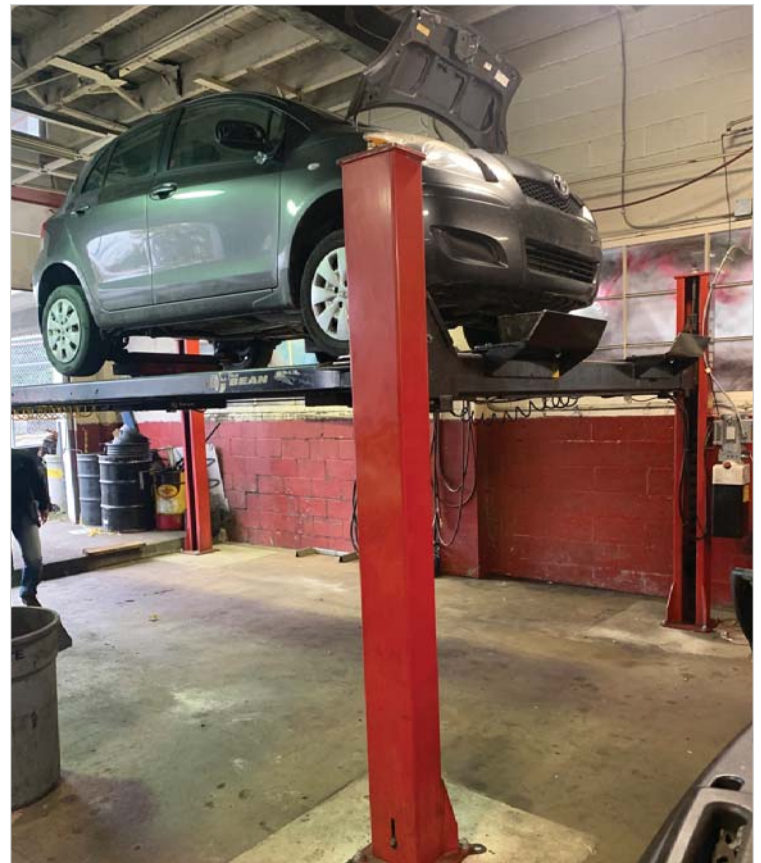
Please contact the Listing Agents for details

DEMOGRAPHICS



WITHIN
3 KM

184,634	2019 Population Estimate	
0.9%	Projected Growth (2019 - 2024)	
Ages	< 19	16.1%
	20 - 59	64.1%
	> 60	19.8%
\$96,643	Average Household Income	



Kyle Wilson

Associate Vice President
604 608 5941
kyle.wilson@cushwake.com

Craig Haziza*

President CAH Realty Inc.
Retail Sales and Leasing
604 640 5891
craig.haziza@cushwake.com

*Craig Haziza is licensed with CAH Realty Inc. and has a contractual relationship with Cushman & Wakefield ULC
E.&O.E.: This communication is not intended to cause or induce breach of an existing agency agreement.

The information contained herein was obtained from sources which we deem reliable and, while thought to be correct, is not guaranteed by Cushman & Wakefield ULC 10/20 bg