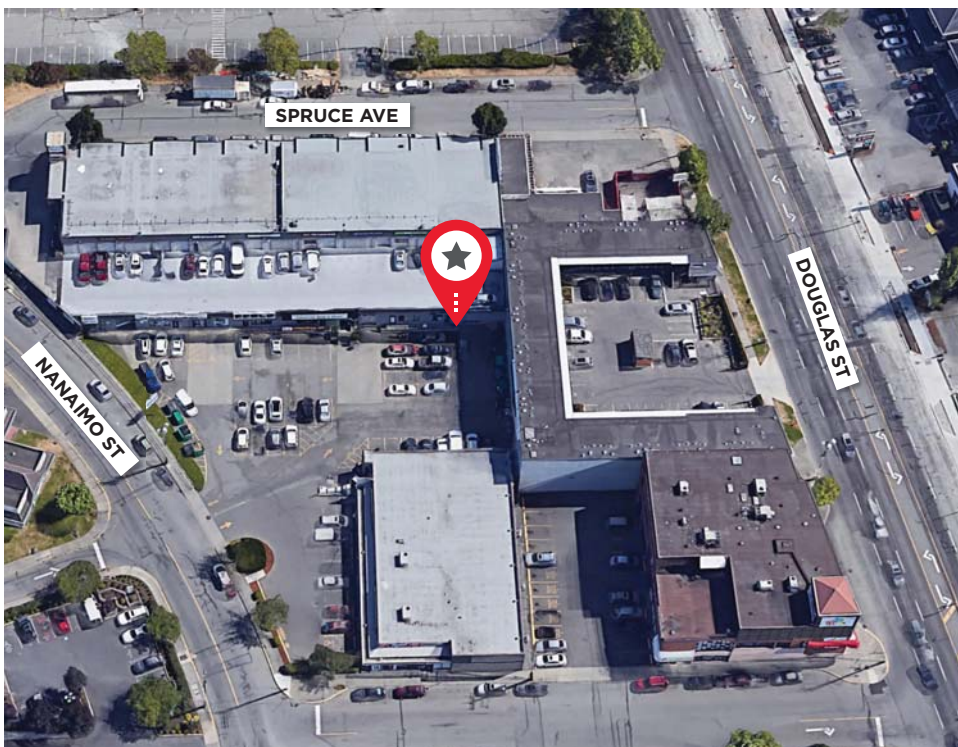




FOR SUBLEASE

3090 NANAIMO STREET

VICTORIA, BC



COLLEEN AUSTIN

Senior Associate
Commercial Sales & Leasing
250 410 3003
colleen.austin@cushwake.com

ADAM FRIZZELL

Vice President
Commercial Sales & Leasing
604 640 5840
adam.frizzell@cushwake.com



FOR SUBLEASE

3090 NANAIMO STREET

VICTORIA, BC

OPPORTUNITY

The subject property is a warehouse, located at 3090 Nanaimo Street, just off Douglas Street and Finlayson, just south of Mayfair Mall. It has very good access to all parts of the city.

This is professionally managed, service commercial retail complex has a variety of businesses including Tile Town, West Coast Appliance, and Christian Book and Science.

FEATURES

- High ceilings
- Kitchen
- 3 piece washroom
- Overhead door
- Dock level loading
- Concrete floor

AVAILABLE AREA

4,160 sf

ZONING

S-1 Limited Service District

Allows for a wide variety of uses.

LEASE RATE

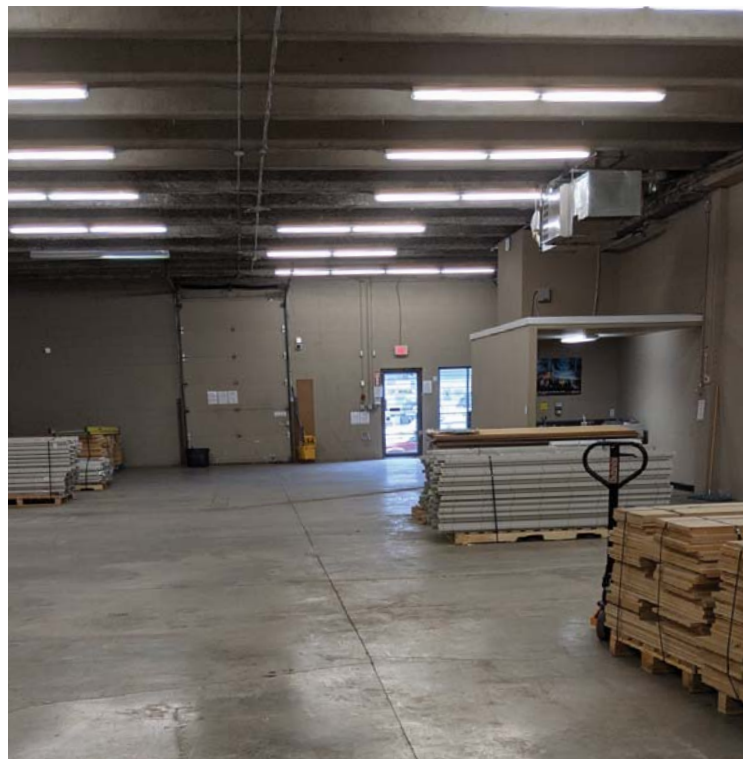
\$16.50 psf

ADDITIONAL RENT

\$4.76 psf

PROPERTY TAXES

\$3.86 psf



COLLEEN AUSTIN

Senior Associate
Commercial Sales & Leasing
250 410 3003
colleen.austin@cushwake.com

ADAM FRIZZELL

Vice President
Commercial Sales & Leasing
604 640 5840
adam.frizzell@cushwake.com

E.&O.E.: This communication is not intended to cause or induce breach of an existing agency agreement.

The information contained herein was obtained from sources which we deem reliable and, while thought to be correct, is not guaranteed by Cushman & Wakefield ULC 01/21 bg