



**CUSHMAN &
WAKEFIELD**

FOR LEASE

1143 AUSTIN AVENUE
COQUITLAM, BC

FLEXIBLE TERM



43,836

VEHICLES PER DAY
ALONG AUSTIN AVENUE



**SFU
BURNABY MOUNTAIN**

Eric Walker

Associate Vice President

604 608 5998

eric.walker@cushwake.com



**CUSHMAN &
WAKEFIELD**

FOR LEASE

1143 AUSTIN AVENUE
COQUITLAM, BC

AREA

2,087 sf

GROSS RENT

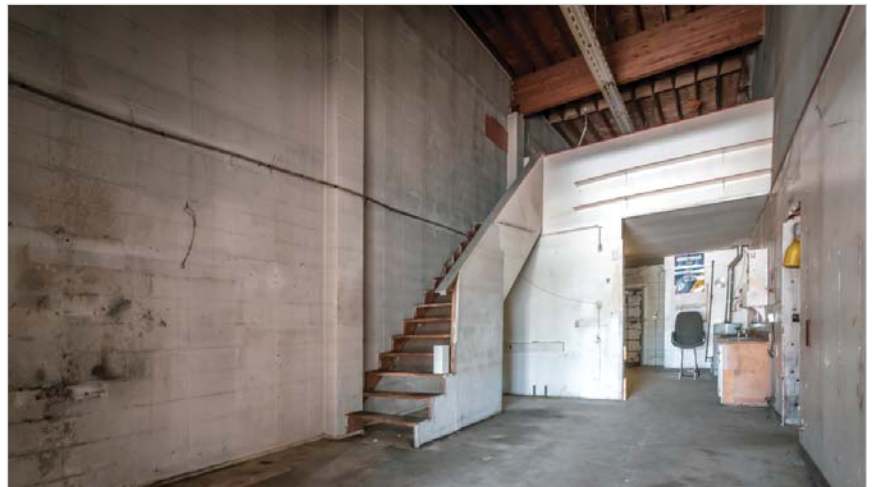
\$30.00 psf or \$5,217.50 plus GST monthly

AREA DEMOGRAPHICS WITHIN 3 KM

| | |
|---------------|------------------------------|
| 1,847 | Businesses |
| 27,060 | Daytime Working Population |
| 77,245 | Total Population |
| 9.2% | Projected Growth (2020-2025) |
| 28,274 | Households |
| 7.4% | Projected Growth (2020-2025) |

| | | |
|-------|--------------|------------|
| Ages: | 19.2% | < 19 |
| | 64.8% | 20 - 64 |
| | 16.1% | > 65 |
| | 41.2 | Median Age |

\$103,754 Average Household Income



Eric Walker

Associate Vice President

604 608 5998

eric.walker@cushwake.com

E.&O.E.: This communication is not intended to cause or induce breach of an existing agency agreement.

The information contained herein was obtained from sources which we deem reliable and, while thought to be correct, is not guaranteed by Cushman & Wakefield ULC 12/20 no